

CONNECTION

YILPORT HOLDING

STAY CONNECTED



4

YILPORT PARTICIPATED IN THE 27TH ORDINARY GENERAL ASSEMBLY MEETING OF THE PORT OPERATORS ASSOCIATION OF TURKEY (TÜRKLİM)

6

YILPORT HOLDING ATTENDED THE 'TÜRKİYE'S FIRST HYDROGEN VALLEY' CONFERENCE

8

MURAT AKBUDAK YILPORT HOLDING CHIEF FINANCIAL OFFICER TOPTALKS INTERVIEW



#YILPORT

#12thbiggest

#globalcontainerterminaloperator

HOLDING

YILPORT Participated in the 27th Ordinary General Assembly Meeting of the Port Operators Association of Turkey (TÜRKLİM) **4**

YILPORT Holding Participates in Intermodal Africa 2024 **5**

01**NORDIC**

Increased Train Connection Between YILPORT Stockholm Nord and Europe **22**

VEHICLE TRACKING APP YILPORT Gävle Container Terminal Implements Advanced App-Based Queue System **21**

03**MEDITERRANEAN**

MFT Invests in Greener Operations **38**

Malta Freeport Enhances Safety Culture with IOSH Training Program **39**

05**PEOPLE**

The Competency Adventure Program was Concluded Successfully **48**

YILPORT Taranto (SCCT) Embraces Bookcrossing: Promoting Reading and Sustainability **49**

07**02 TÜRKİYE**

Ankara's Port, Başkent OIZ Eti Logistics Intermodal Terminal Proudly Launches its Operations! **16**

YILPORT Gebze Simultaneously Handles Large Vessels and Cargo Operations **17**

04 IBERIA

YILPORT Liscont Welcomes 'Lady Jane' **30**

YILPORT Leixões Marks First Vehicle Shipment from Stellantis Mangualde **31**

06 LATAM

YILPORT Puerto Bolívar Attends CIPEM Annual Breakfast **44**

CONNECTION MASTHEAD

Executive Editor Ece YAVUZ
Assistant Editor İlayda LEBLEBİCİOĞLU
Designers Atakan ÖZEL | Ece YAVUZ
Guest Editors Kemal Ekin AYSEL



YILPORT Participated in the 27th Ordinary General Assembly Meeting of the Port Operators Association of Turkey (TÜRLİM)



YILPORT participated in the 27th Ordinary General Assembly meeting of the Port Operators Association of Turkey (TÜRLİM), which aims to address sectoral challenges of port operators on a common platform and ensure solidarity.

The General Assembly, where the new management of the association, uniting the sector with its 78 members, was determined, was attended by YILPORT Holding CMO Erhan ÇİLOĞLU as Deputy President, YILPORT Türkiye Regional General Manager and Head of GLC Remzi Cem GÖKTAŞ as Board Member, and YILPORT Holding Government Relations Director Bahri KAYA as a member of the audit committee. On March 8, International Women's Day, female employees of YILPORT also participated in the congress.



intermodal AFRICA 2024



YILPORT Holding Participated in Intermodal Africa 2024

YILPORT Holding participated in Intermodal Africa 2024, which took place in Swakopmund, Namibia.

During the two-day conference, business leaders analyzed the latest global transportation and logistics issues. With the attendance of 350 influential players from various sectors of the transport and logistics industry, including leading shipping lines, freight forwarders, investors, and port authorities, the event provided networking opportunities.

YILPORT Holding Global Sales and Marketing Director Luciano ALVERNAZ, Global Director / General Cargo, Bulk, Break Bulk Serhan ÇİLENGİR, and YILPORT ATSL-Takoradi General Manager Ferhat AKKAYA participated in Intermodal Africa 2024.

YILPORT had a chance to engage with industry experts, explore diverse business opportunities, and enjoy the hospitality of Namibia.



YILPORT Holding Attends 'Türkiye's First Hydrogen Valley' Conference

YILPORT Holding attended the 'Türkiye's First Hydrogen Valley' conference organized by Bursa Industrialists and Businesspeople Association (BÜSİAD) represented by Metehan YAŞA.

With YILPORT's strategy to reduce carbon emissions in terms of sustainability, Mr. YAŞA shared the work done in the field of hydrogen for the last three years with participants from different sectors (Automotive, Steel Industry, Universities) and explained YILPORT Holding's Zero Emission vision and target.

At the end of this conference, where the participants listened with interest and attention, YILPORT Holding received important meeting invitations for future cooperation within the sustainability framework.



What's Next?

By 2030, YILPORT aims to rank among the TOP 10 port operators in the world

we're making every move count

TÜRKİYE

2005 - GEBZE
2012 - ROTAPORT
2012 - GEMLİK
2016 - SOLVENTAŞ
2023 - BAŞKENT OIZ
ETI LOGISTICS INTERMODAL

MALTA

2011 - MALTA FREEPORT

SWEDEN

2014 - GÄVLE
2014 - STOCKHOLM NORD

NORWAY

2014 - OSLO

PORTUGAL

2016 - LISCONT
2016 - SOTAGUS
2016 - AVEIRO
2016 - LEIXÕES
2016 - FIGUEIRA DA FOZ
2016 - SETÚBAL
2016 - TERSADO

SPAIN

2016 - HUELVA
2016 - FERROL

PERU

2016 - PAITA

ECUADOR

2016 - PUERTO BOLÍVAR

GUATEMALA

2018 - QUETZAL

ITALY

2018 - TARANTO

GHANA

2023 - ATSL-TAKORADI

CROATIA

2023 - ŠIBENIK

...

“ Murat AKBUDAK YILPORT Holding Chief Financial Officer **TopTalks Interview**



Please scan QR code for the Full Episode.



MURAT AKBUDAK

YILPORT Holding Chief Financial Officer

Can we have background information on you?

I joined the YILDIRIM Group in 2012 and have been here for around 12 years. When YILPORT was in baby steps, I was on the acquisition and project finance side of YILDIRIM Group. In 2016, I joined YILPORT to lead all the finance, functions of YILPORT Holding.

Before joining the YILDIRIM Group, I did project finance and investment banking in Türkiye with different companies. It's a pleasure to be at YILPORT.

What are the major topics on your agenda lately?

We just finished the year, which was quite tough, but we now have ambitious targets for 2024. Recently, we acquired a new port in Africa, marking our first step into this continent and its culture. As we adapt to this new environment, we're also actively pursuing other acquisition opportunities. Despite the changes and challenges ahead, YILPORT remains one of the fastest-growing port operators globally, and we are determined to maintain this momentum.

How does YILPORT navigate the challenges posed by ongoing global crises such as the Red Sea and the Black Sea, and adapt its logistics routes to ensure efficiency and effectiveness?

As YILPORT, we realized there are a lot of changes happening. So, rather than focusing on the changes, we are trying to strengthen our muscles, adapt, and cope with these changes. This big trend changed after COVID-19, the liners became so powerful they made huge profits, and they consolidated into the market. Due to the supply chain disruptions, there have been a lot of changes happening since that time, there was a war between Ukraine and Russia which heavily affected Türkiye because Türkiye is the neighborhood of those countries. Of course, we lost some of our customers, but at the same time, we had some opportunities to capture new markets. In general, there are a lot of things that are changing, and we cannot control them. We are trying to adapt ourselves to those changes and how we can react. We are focusing on the operational performance. We want to provide the best service to our customers. Liners are dominating the market, and it's not easy to survive under these circumstances as a port operator, because liners are not liners anymore, they are investing in the logistics sector they are building the in-land depots, they are buying the freight forwarders, and the terminals. So, they are dominating the market, and as a single port operator, of course, we're an international port operator. We are trying to adapt ourselves to strategic alliances as much as we can with the liners, but in the end, the bottleneck of the business is the cargo owners. Most of our terminals are gateway terminals. For this reason, we need to be so close to our customers, and the customers are the bottleneck of the industry.

We are focusing a lot on providing solutions, and integrated solutions. Not only the port but also, end-to-end solutions because we call ourselves a one-stop shop. To be competitive, the first thing is your location, in which we are very well located. That's the reason we have very good gateway cargoes and the second thing, you need to be very close to your customer and know how you satisfy your customer. Of course, it comes with the best level of service which we are quite good at, and we are heavily investing in those service level improvements. So that's how we cope with these challenges and changes.

Considering the COVID-19 period followed by global inflation, how does YILPORT, as a global company, effectively manage operational costs to maintain efficiency and sustainability?

This is another side effect of the COVID-19 because during COVID-19, especially central banks entered the market to foster growth and they printed a lot of money to increase the demand within the economies, when you print that much of money, when you pump that much of money into the economies, of course, the inflation will come. So that's the problem that we had the global inflation, we have 24 terminals, so we don't have only one solution that we can use for all terminals. In all countries, we have different problems, and solutions. We have a portfolio in that we have developed countries like Europe, emerging countries like Türkiye, and Latin America. These economies are affected quite differently but, in the end, the outcome is simple. So, there is a reality that all over the world, now all economies are facing a big inflation problem. Inflation is the kind of problem that is sticky. So, it's not easy to get rid of the inflation. So how do we cope with the increase in cost? Of course, we were trying to optimize as much as we could to focus on our costs, try to cut



YILPORT Puerto Bolívar, Ecuador

the costs and invest in technology to provide better productivity for being more efficient in the market and to have a better structure because otherwise, I don't think you will survive within such an environment because you have a huge cost base, which is increasing, and you have a big competition, liners are also playing a quite vital role in this competition. So, if you cannot control the market, you need to control your costs. So that's our focus area, and we introduce a lot of cost-saving initiatives within our organization, and we are trying to keep our margin on a sustainable level. Of course, it's challenging. It's a kind of global problem, unfortunately, and central banks also took some kind of precautions. They increased the rates, which is helping to reduce the inflation level. At the same time, it comes with a different problem, now there is also a slowdown in the economy. So, it's not that easy to control all these problems at the same time, but we are trying to be resilient, and we are trying to be adaptive as much as we can to cope with those problems.

Due to recent shifts in global economics, you need to evaluate more dynamics, how YILPORT is evaluating, and what is the strategy for emerging markets to cope with employing solutions?

In the YILPORT strategy, we are looking at the investments from two perspectives. First, as YILPORT, we want to put our expertise into

creating turnaround stories. So, this is the main pillar in our decision-making, and the other one is to reach international financing to have a better financing scheme to create this turnaround story. There are two problems these days, domestic demand in emerging markets. They are under pressure due to the recent increase in interest rates. This creates another problem money is not cheap anymore. So, we cannot access cheap money and long-term financing. This is one of the hurdles that we are facing as an international port operator, so we are quite selective in those days for our investments. Of course, if there is an opportunity, which we have done many times in our portfolio, we are after it

“As YILPORT, we are committed to providing a good level of service to our customers to satisfy their expectations and needs to be able to be competitive within the market to our stakeholders.”



and we are evaluating a lot of projects at the same time, and emerging markets are always generous. If you make the right investment with the right financing, that is our key success as of today and we want to keep it, but it is a bit difficult in today's environment. Of course, we have different projects, we just recently entered Africa, we believe in the future of Africa, and we are looking for different also projects in Latin America, where we have one of our biggest investments in Ecuador. So, if we have the opportunity, we will go after it, but we are also waiting a bit for central banks to start again in monetary easing to reduce the interest rates. Most probably they will start in the third quarter of this year.

How is YILPORT adopting this digitalization process? There are several serious investments have been made within the year, what are the future projects?

This is one of the challenges because we are a very fast-growing company. So, if you grow at that speed, you need to also adapt some of the criteria, and the standards to be able to maintain a certain level of service and in that regard, digitalization is essential. We started this journey 4-5 years ago with the digitization of our processes and we implemented the SAP throughout the YILPORT organization. We are

also working with NAVIS on the TOS side. We are trying to digitalize all our processes from end to end to mitigate potential leakages and potential human error. We are heavily investing in this part because we have three values as YILPORT. One is people, the other one is process, and the third one is the technology. As a service provider, you need to invest in people, processes, and technology. So, digitalization is a combination of those three areas, our journey started with a lot of investments, and we continue from our owner's perspective as well. We want to put a kind of standard where we invest a new terminal, we put our standards like on the invoicing, on the operations, on the finance side, and to provide a certain level of service, we need to be digital. So, we are heavily investing. It's not just YILPORT, we also have an umbrella and guidance of YILDIRIM Group, and as an example last year, YILPORT was awarded by SAP in Türkiye for two big projects. We were the pioneer in the logistics sector, and we were also awarded as the ambassador of digitalization in Türkiye.

We started our journey in Türkiye, we have 5 terminals in the region then expanded to 24. What are your thoughts on this Turkish economic development?

YILPORT Gemlik, Türkiye



This is quite a difficult question because Türkiye had a big election last year, and now we are approaching another election. And between those elections, we hit two different economic policies. Before the election, the Government was more on the monetary easing side, trying to create more domestic demand to support the economy, and this was putting a lot of pressure on the Turkish lira, and in the couple of years, especially for five years, we had a trend. The Turkish lira was depreciating against the dollar, and this was helping especially for the companies that generate revenues in dollars or euros or international currencies however, this trend has changed. Now, the government is also trying to stabilize the Turkish lira. They are putting a bit of control on the Turkish lira, which pushes up our cost on a dollar basis, and this has given us quite a challenging environment until the election, which is going to be happening at the end of March, we see a slowdown in the economy, and there are of course a lot of rumours that the Turkish central bank will put more tightening policies to curb the domestic demand, which will put a big pressure on the demand side and when it comes to the demand side, the Turkish economy is quite dynamic and strong economy by nature. We have a hesitation, and this is also coming from the market reports as well. There may be a slowdown this may also affect our volumes in Türkiye. As you mentioned, we started our journey in Türkiye, and Turkish terminals are contributing a lot to our portfolio. So, it's going to be quite challenging for us but, we also believe in the dynamics of Türkiye because Türkiye is a mixture of many things. We need to be resilient and adaptive to the changes, we are quite adaptive, and closely

monitoring the Turkish economy, and we will react as much as we can to keep our market share at a reasonable margin level.

What message would you like to send to YILPORT customers and business partners as the CFO of YILPORT Holding?

Customers are at the center of our business. When I joined the Group back in 2012, it was an early meeting that I had with Mr. YILDIRIM, I saw a message in his chambers hanging on the wall saying that "If we don't take care of our customers, someone else will." This shows the DNA of the YILDIRIM Group, and that is the reason I am very close to our customers. I attend a lot of customer visits and dinners. So, customers are important to us, and we would like to provide a good service level for our customers. As we discussed extensively, we are under the pressure of many challenges due to a lot of ambiguities in today's world, so we would like to be very close to our customers to provide them with different solutions. It's not just port service anymore. We need to provide integrated logistics services, so we are happy to be here to serve our customers, our stakeholders, and our banks. Of course, we are glad that we are working very closely with them. As YILPORT, we are committed to providing a good level of service to our customers to satisfy their expectations and needs to be able to be competitive within the market to our stakeholders. We are always committed, and happy to work with them. I wish everyone a successful, although it's challenging, a successful year.



GAMECHANGER

in Port Operations & Container Terminal Management



in 25 Marine and 7 Inland Terminals

TÜRKİYE: GEBZE | SOLVENTAŞ | GEMLİK | KÖRFEZ | BAŞKENT OIZ ETI LOGISTICS INTERMODAL TERMINAL
MALTA: MALTA (MFTL) **ITALY:** TARANTO (SCCT) **CROATIA:** ŠIBENIK **SWEDEN:** GÄVLE | STOCKHOLM NORD
NORWAY: OSLO **SPAIN:** FERROL | HUELVA **PERU:** PAITA **ECUADOR:** PUERTO BOLÍVAR **GUATEMALA:** QUETZAL
PORTUGAL: LISCONT | FIGUEIRA DA FOZ | LEIXÕES | AVEIRO | SETÚBAL | TERSADO | SOTAGUS **GHANA:** ATSL- TAKORADI



TÜRKİYE REGIONAL INFORMATION

Located in the Marmara region of Türkiye, YILPORT's multipurpose terminals offer the best solutions, located at different coasts and cities in the hearts of industrial zones. The terminals are closely connected to main highways offering easy access. YILPORT Gebze, Gemlik, Körfez, Solventaş, and Başkent OIZ Eti Logistics Intermodal Terminal are utilized with bonded and non-bonded areas, warehouses and supported by end-to-end logistic services.



Gebze



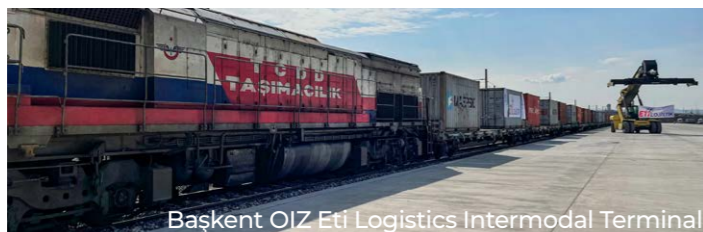
Gemlik



Solventaş



Körfez



Başkent OIZ Eti Logistics Intermodal Terminal

Q1 - 2024
Regional
Throughputs



Container
320,130
TEUs



General Cargo
1,093,298
TONs



Liquid
908,000
M³



Ro-Ro
40,596
CEUs



YILPORT Holding Türkiye Region Sales and Marketing Responsibles

Head Office Contact: Mr. Ertan OCAK
ertan.ocak@yilport.com

Region Contact: Mr. Emre ATAY
emre.atay@yilport.com

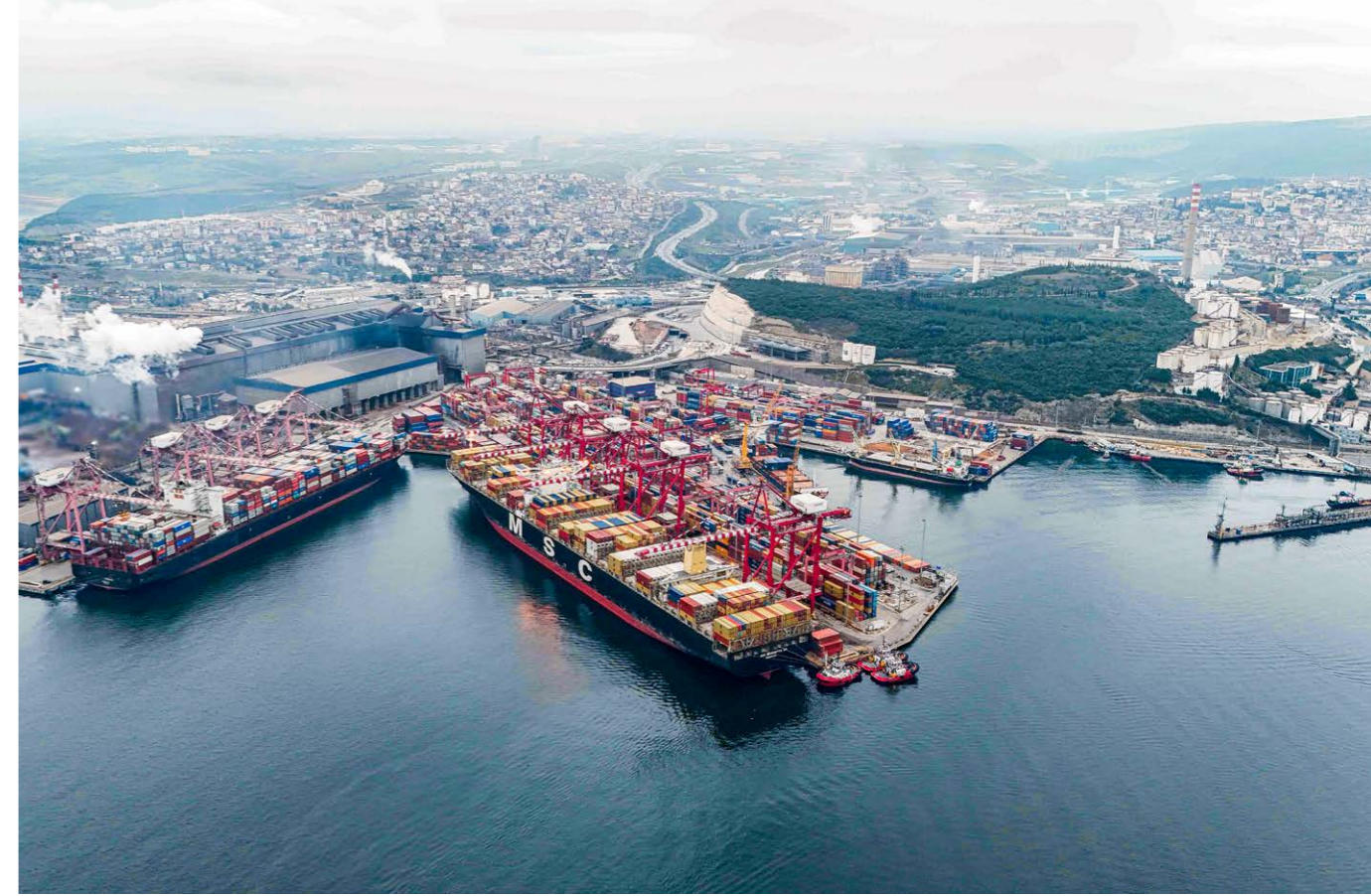
Solventaş Local Sales:
General Manager: Ms. Elif ARTAN
elif.artan@solventas.com.tr

Sales Manager: Mr. Berk DELİPINAR
berk@solventas.com.tr



UTMOST PROJECT CARGO OPERATION AT **YILPORT GEBZE**

YILPORT Gebze conducted the largest and most comprehensive project cargo operation ever. YILPORT Gebze operation team completed this two-stage operation, which required careful planning and implementation. 20 pieces of subsea cable laying crane parts weighing 235 tonnes and the heaviest part of 91 tonnes were discharged from the MV ARCTIC ROCK and loaded onto the MASTER DIVER barge.



YILPORT Gebze, Türkiye



YILPORT Gebze Simultaneously Handles Large Vessels and Cargo Operations

YILPORT Gebze welcomed two vessels: the 366-meter-long MSC BENEDETTA XIII with a capacity of 13,100 TEU, and the 300-meter-long TOCONAO with a capacity of 8,600 TEU. The seamless coordination of operations for these large vessels, among the largest recently handled at YILPORT Gebze, was made possible through the implementation of high-performance gate, yard, and vessel operations.

Alongside, the handling of these high-volume container vessels, the terminal also conducted simultaneous operations for the Medkon Perla and General Cargo vessels.

Ankara's Port Başkent OIZ Eti Logistics Intermodal Terminal Proudly Launches its Operations!

In the first phase of Ankara's Port Başkent OIZ Eti Logistics Intermodal Terminal, with a capacity of 500,000 TEUs for containers and 20,000,000 tons for dry bulk, a railway connection and a 700-meter platform were opened, and the first train operation was successfully carried out at the terminal.

This terminal, which plays a significant role in Turkish trade, accelerates the integration of Ankara-based companies into global trade networks by connecting Anatolia to Turkish marine terminals within 24 hours.



YILPORT KÖRFEZ

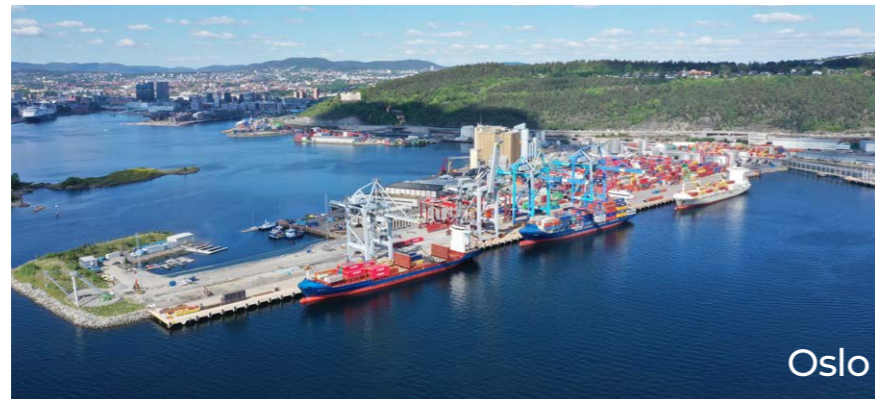
ADVANCING REGIONAL TRANSPORTATION
& LOGISTICS SOLUTIONS

YILPORT Körfez is located on the northeast coast of the Marmara Sea in Kocaeli Province, around 85 kilometers from İstanbul. The facility provides various services for transporting dry bulk and general cargo, serving big industrial companies like steel, grain, cement, and minerals.

YILPORT Körfez has been as a reliable partner for the iron and steel industry, efficiently handling the unloading and storing 55,000 tons of steel coil cargo in its warehouses. Furthermore, with the completion of a new railway connection to the national railway line, the facility has expanded its transportation options, enabling it to offer seaway services to clients in nearby provinces.

NORDIC REGIONAL INFORMATION

Located in Scandinavia region, YILPORT's multipurpose terminals offer the best solutions, at different coasts of Norway and Sweden in the hearts of industrial zones. The terminals are closely connected to main highways offering easy access. YILPORT Oslo, YILPORT Gävle and Stockholm Nord terminals are utilized with bonded and non-bonded areas, warehouses and supported by end-to-end logistic services.



Oslo



Gävle



Stockholm Nord

Q1 - 2024
Regional
Throughputs



Container
125,976
TEUs



General Cargo
424,096
TONS



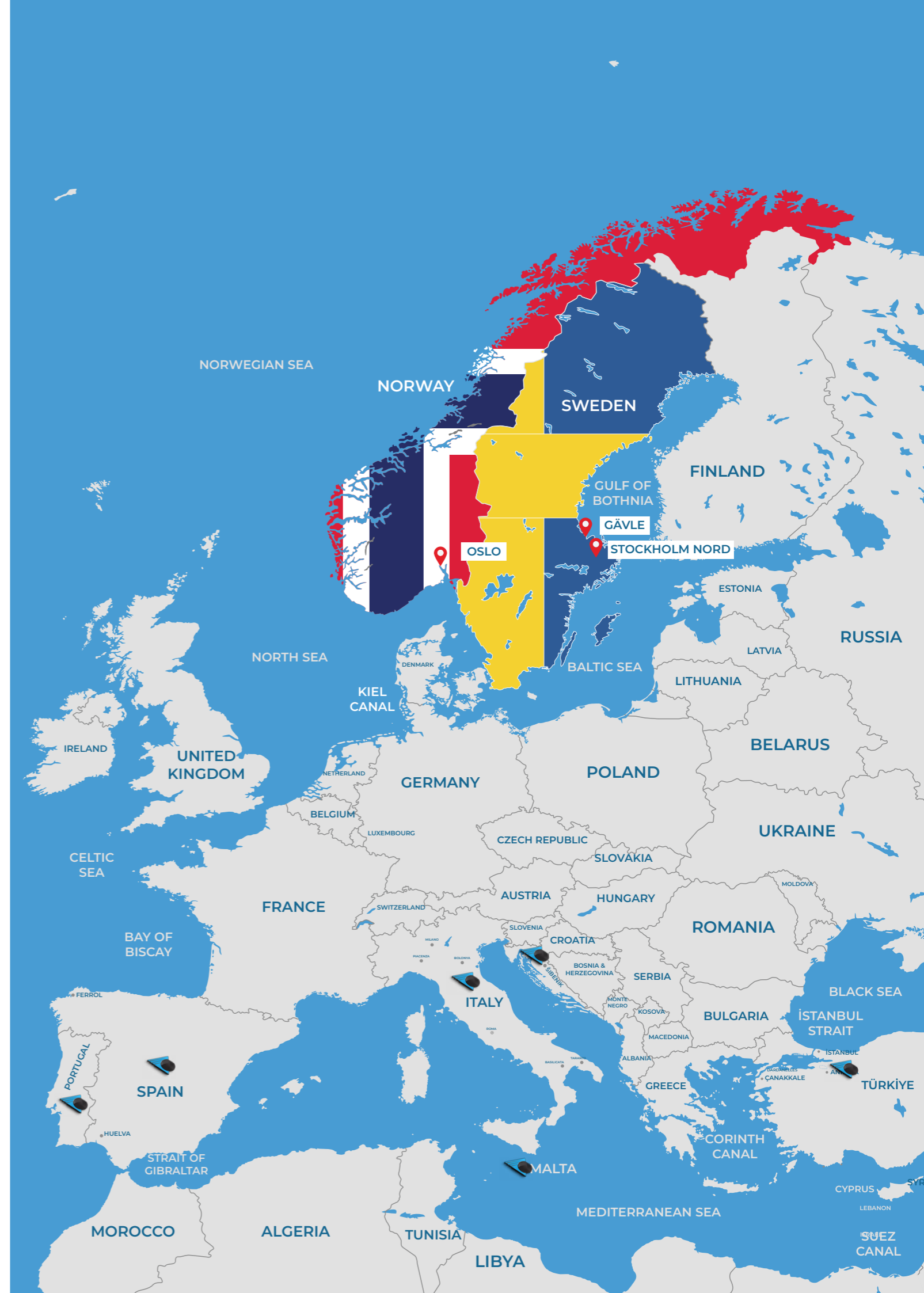
Ro-Ro
4,926
CEUs



YILPORT Holding Nordic Region Sales and Marketing Responsibles

Head Office Contact: Sales & Marketing
sm@yilport.com

Region Contact: Mr. Håkan BERGSTOM
hakan.bergstom@yilport.com



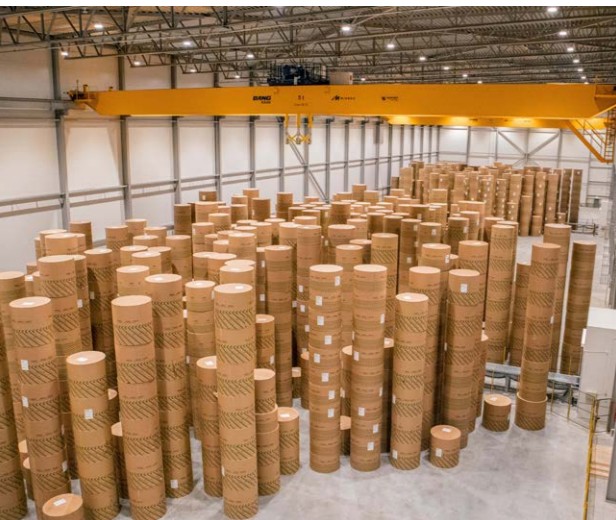


billion SEK investment in new infrastructure that YILPORT Gävle carried out in 2021. The investment comprised an expansion of the container terminal where 75,000 square meters of land area was added, a new quay with three cranes, six automated RTG cranes with the possibility of refrigerated container storage, and a border control station for food products. All in all, the investment has more than doubled the capacity, increasing from 250,000 TEUs to 600,000 TEUs per year.

The investment has enabled more efficient cargo handling as well as larger and more frequent vessel calls. Paired with a strong Swedish base industry, this has favored the containerization of export goods at YILPORT Gävle's four Container Freight Stations (CFS). These stations focus on different types of goods, including steel, sawn timber, paper stored in the automated high-bay warehouse, and a station for miscellaneous goods such as machine parts. In total, the CFS segment has increased by almost 70 percent during the period 2021–2023.

There has also been a rise in imported volumes bound for the Stockholm region, entering via YILPORT Gävle during this period. This trend can be attributed to the strategic location of the sister terminal YILPORT Stockholm Nord in Rosersberg, situated between Stockholm and Uppsala, in Sweden's largest consumption market. The increased volumes have resulted in an expansion of the train shuttle service offered by YILPORT for additional transport between the Gävle and Stockholm terminals. The frequency of trains on the shuttle service has risen from three to four weekly departures, with occasional deployment of a fifth train to handle the growing volumes.

YILPORT Gävle's Container Volumes Increase 57% Market Share on the Swedish East Coast



More than half of the containers on Sweden's east coast are now handled via YILPORT Gävle. This is evident after the industry organization Sveriges Hamnar released their cargo volume summary for 2023. YILPORT Gävle is now solidifying its position as the largest container terminal on the East Coast.

Despite a three percent decline in the Swedish market since 2021, YILPORT Gävle sees a 30 percent surge in container volume and a compound annual growth rate of 14 percent over the past three years. As a result, between 2021 and 2023, YILPORT Gävle's market share of the total container volume in Sweden rose from nine to 12 percent. Looking solely at the Swedish East Coast, YILPORT Gävle's market share grew by ten points during the same period, from 47 to 57 percent.

A significant factor contributing to the substantial increase over these years is the



"Sweden's East Coast has a new container giant in YILPORT Gävle. Our investments in infrastructure and efficient logistics solutions have not only solidified our position as leaders, but also enabled significant growth despite a challenging market. We are strategically located in Mid-Sweden with proximity to both Stockholm and northern Sweden, which attracts new customers and more import volumes. At the same time, the increased capacity has enabled the shipping companies to increase the size of the ships that call at us, without sacrificing productivity. In our role as a terminal operator, our commitment is to continue to deliver solutions that meet our customers' needs while also developing our own business."

Eryn DINYOVSZKY,
YILPORT Nordic CEO



Increased Train Connection Between YILPORT Stockholm Nord and Europe

As a result of increased demand from the continent, the number of departures between YILPORT Stockholm Nord and Europe has doubled with Spedition Bode and Kombiverkehr's investment in expanded train service. The European shuttle will increase as of January from three to six regular departures per week.

Stockholm Nord is now connected to Lübeck six times a week



"The Lübeck – Stockholm Nord connection is based on many years of successful cooperation with Spedition Bode. While Bode continues to guarantee basic capacity utilization of the trains, the connection now welcomes all freight forwarders for booking. With the integration of the train into our Europe-wide network alongside the new Malmö - Stockholm Nord service, we offer a wide range of options in climate-friendly intermodal transport via the fixed link or including ferry transport. As a result, Stockholm Nord is now connected to Lübeck six times a week. With our one-stop shop offers, freight forwarders receive a continuous service from Duisburg, Ludwigshafen, Barcelona, or Verona, for example, while saving around 80% CO2, says Ulrich Bedacht, Manager Northern European Seaports & German Baltic Sea Ports at Kombiverkehr."

Ulrich Bedacht,

Manager Northern European Seaports & German Baltic Sea Ports at Kombiverkehr



Cost-Effective Logistics Solutions

"This is a significant step forward that opens up opportunities for both importers and exporters that need reliable, consistent, and cost-effective logistics solutions. We are happy to be part of the chain and to contribute to creating a more interconnected and sustainable freight transport, says Joseph Muhumuza, Regional Sales Manager at YILPORT Nordic."

Joseph Muhumuza,

Regional Sales Manager at YILPORT Nordic.



"I'm glad that our collaboration with Kombiverkehr has doubled our weekly departures. Since 2015, we've proudly connected YILPORT Stockholm Nord to Europe via Lübeck, and now to all major continental terminals, says Stev Etzrodt, Executive Managing Director at Spedition Bode."

Stev Etzrodt,

Executive Managing Director at Spedition Bode.

Kombiverkehr has a well-established network with over 110 terminals in Europe and views the fruitful collaboration with Spedition Bode as the main reason for the increased train connections.

The long-term cooperation between YILPORT and Spedition Bode has opened for seamless transport of all container types including trailers to and from the Stockholm-Mälardal region. The new train schedule not only adds flexible intermodal transport solutions as both YILPORT and Spedition Bode see further development for train transport in the future.



Enhancing Train Routes for Increased Accessibility

“We are currently investigating the possibilities to establish even more train routes to other parts of the country. In addition to the train connection to Europe, we have recently expanded our own train shuttle that runs between our container terminal in the port of Gävle and Stockholm North from three to four days a week.”

Joseph Muhumuza



Building a Robust Intermodal Network in Sweden with YILPORT and Kombiverkehr

“Looking ahead, we see greater collaboration and synergies with YILPORT and Kombiverkehr. Our long-term plan includes establishing a connection from Stockholm together with Kombiverkehr to Northern Sweden. It is our wish to build a robust Swedish network, facilitating intermodal traffic with capability to transport reefer containers, dry container as well as trailers and tanks seamlessly.”

Stev Etzrodt

YILPORT Oslo Welcomes Enhanced Short Sea Service with Increased Frequency

YILPORT Oslo welcomes a new dedicated Short Sea service, a collaboration between Samskip and Viasea, aimed at enhancing frequency and predictability. This service offers three weekly calls to YILPORT Oslo, up from the previous two, expanding its connectivity.

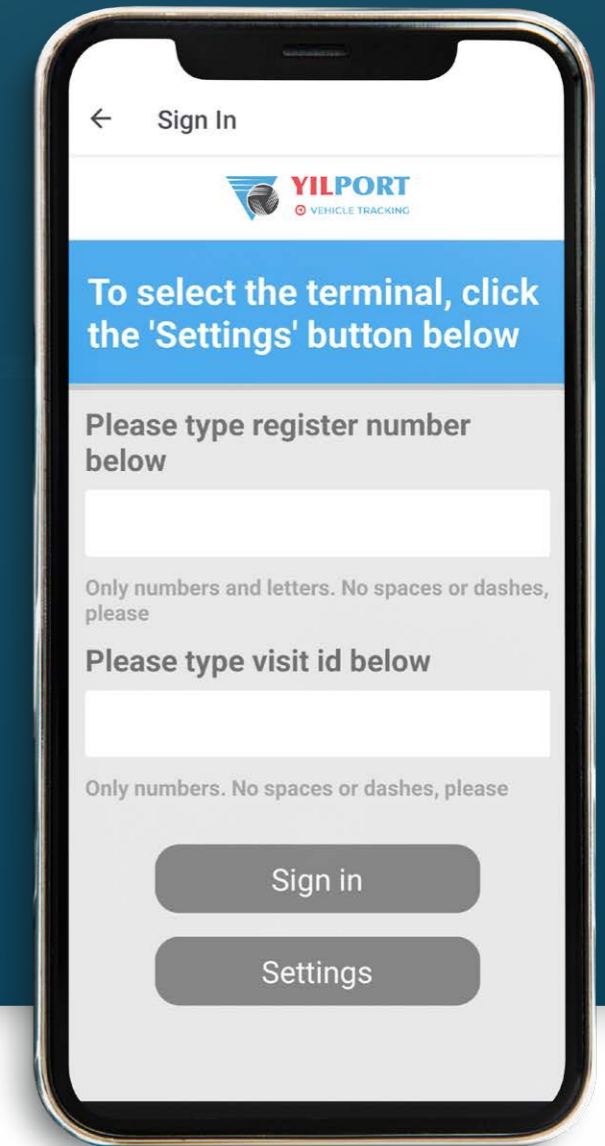
As part of this enhancement, the vessels now operate from Tilbury instead of Thamesport, ensuring seamless connections with Rotterdam and Immingham in the UK. This optimized route facilitates intermodal connections from YILPORT Oslo to a wide-ranging multimodal network across Europe, providing extensive transport opportunities.

VEHICLE TRACKING APP

YILPORT Gävle Container Terminal Implements Advanced App-Based Queue System

YILPORT Gävle recently upgraded its operations by adopting a 100% app-based queue system, powered by the innovative "YILPORT Truck Tracking" app. Initially designed for RTG operations, this app has successfully reduced wait times over the past year. It has been extended to cover the entire terminal, promising faster handling for all bookings.

The adoption of this app-based queue system represents a significant advancement for the YILPORT Gävle Container Terminal. It aims to optimize operations, reduce wait times, and elevate the overall user experience for all stakeholders involved.



1. Fair and Efficient Process

The system operates on a first-come, first-served basis, ensuring fairness and efficiency in handling bookings. By optimizing the queue system, idle time within the terminal is minimized, allowing truck drivers to allocate more time to other deliveries.



2. GPS Positioning

Seamlessly integrating with the yard planning system, the app enables real-time tracking of container locations. By combining GPS data from the driver's mobile phone, the system can prioritize trucks based on their proximity to designated pickup or drop-off points, further enhancing overall efficiency.



3. Privacy and GDPR Compliance

The GPS functionality is activated only during app operation and is deactivated and deleted after delivery. This approach ensures full compliance with data protection regulations and safeguards user privacy.



4. Enhanced Visibility and Control

Users receive live updates via the app, providing instant notifications of any changes to their delivery status. This increased visibility and control empower users to manage their tasks more effectively.

IBERIA REGIONAL INFORMATION

Located in the Iberian Peninsula, YILPORT's multipurpose terminals offer the best solutions, at different coasts of Portugal and Spain in the hearts of industrial zones. The terminals are closely connected to main highways offering easy access. YILPORT Leixões, Liscont, Sotagus, Setúbal, Tersado, Figueira da Foz, Aveiro, Huelva and Ferrol terminals are utilized with bonded and non-bonded areas, warehouses and supported by end-to-end logistic services.



Q1 - 2024
Regional
Throughputs



Container
293,314
TEUs



General Cargo
541,956
TONs



Ro-Ro
10,657
CEUs



YILPORT Holding Iberia Region Sales and Marketing Responsibles



Head Office Contact:
sm@yilport.com

Region Contact: Mr. Diogo CASTRO
diogo.castro@yilport.com

YILPORT Liscont Welcomes 'Lady Jane'

YILPORT Liscont played an important role in marking the return of OOCL (Orient Overseas Container Line) on the 12th of January at Porto de Lisboa.

The container vessel Lady Jane, a 294.5-meter-long, with a capacity of 5,000 TEUs, initiates the EEX-Europe East Coast South America Express service.

The vessel berthed at the YILPORT Liscont before its voyage to Algeciras and subsequently to the port of Santos, Brazil. Before Lisbon, the vessel visited the ports of Hamburg and Antwerp, solidifying the importance of this route in the global shipping network.

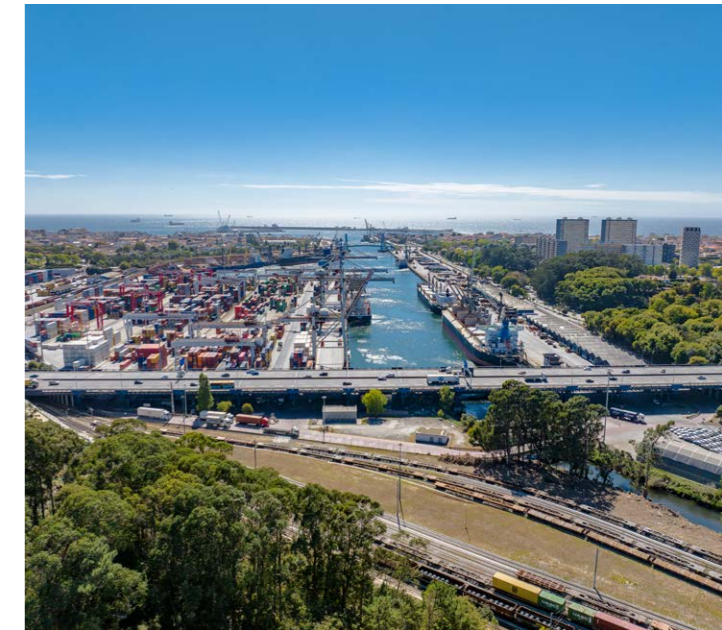
The cargo the YILPORT Liscont handles in collaboration with Brazil amounts to approximately 1.5 million tons. Notable export products include olive oil, wine, fruit, and preserves.

This significant event is part of a new service to South America, launched in the last quarter of 2023, and is a collaborative effort between OOCL, COSCO SHIPPING Lines, and Ocean Network Express. The strategic connection established by this service states the YILPORT Liscont standing as an export platform for national companies and other European markets. The availability of feeder services enhances the advantages offered by this route in connecting with South America.



YILPORT Leixões Marks First Vehicle Shipment from Stellantis Mangualde

YILPORT Leixões has achieved a significant milestone by completing the first shipment of vehicles coming from Stellantis Mangualde. This operation was facilitated through the utilization of the ro-ro vessel Seraphine to convey them to the port of Zeebrugge in Belgium. Scheduled to recur every week, this enterprise not only signifies an important moment in the partnership between YILPORT Leixões and Stellantis Mangualde but also underscores YILPORT Leixões' commitment to being the reliable logistics partner for major national exporters.



YILPORT Leixões, Portugal

YILPORT Iberia Attended Intermodal South America

YILPORT Iberia attended Intermodal South America. The delegation from YILPORT Iberia included YILPORT Holding Global Sales and Marketing Director Mr. Luciano ALVERNAZ, YILPORT Liscont & Figueira da Foz General Manager Mr. Bruno VALE, and YILPORT Leixões & Ferrol Terminal Manager Mr. Duarte Calapez PITEIRA.

Intermodal South America provided a platform for YILPORT Iberia to engage with industry peers, exchange insights, and showcase their cutting-edge solutions.



YILPORT Iberia and Holding Team

YILPORT Leixões: Premier Gateway Terminal

YILPORT Leixões, the largest seaport in the north of Portugal, offers multimodal operation with its extensive capabilities. The terminal recently had a successful loading operation by an 85-tonne portable shear PHGP 700T series produced by a Portuguese manufacturing-based company onto the Seraphine Ro-Ro vessel, bound for Rotterdam with Poland as its final destination.

We are honored to provide service as YILPORT Leixões and to be consistently chosen by significant industrial companies to export their end products committed to short sea shipping and enabling competitive connections to major European port hubs.



YILPORT Leixões, Portugal

YILPORT Liscont is Setting Sail Towards a Cleaner Tomorrow!

YILPORT Liscont participated in the "Partnerships for the Decarbonization of the Port of Lisbon" event organized by the Port Authority of Lisbon. YILPORT Liscont General Manager Bruno Vale presented our Pilot Project on Electric Mobility, demonstrating YILPORT's commitment to sustainability and innovation in port operations.

Following the event, Port of Lisbon signed a protocol for further collaboration on Electric Mobility, reaffirming the dedication to driving positive change in the industry. At YILPORT Liscont, we are excited about the potential of electric mobility to create a cleaner, greener future for the Port of Lisbon and beyond.



Bruno VALE
YILPORT Liscont General Manager

YILPORT Iberia Receives Prestigious ESG Award for Exemplary Sustainability Practices in Portugal

YILPORT, a prominent player in the port industry, has been honored with the prestigious ESG Award by Caixa Geral de Depósitos (CGD), underscoring its commitment to exemplary Environmental, Social, and Corporate Governance practices in Portugal. The ceremony at the University of Évora served as a platform to recognize companies that have demonstrated outstanding dedication to sustainability and responsible business conduct.

YILPORT Iberia's remarkable achievement is attributed to its concerted efforts towards minimizing environmental impact and fostering sustainability across its operations. The deployment of state-of-the-art port equipment, including cutting-edge RTG (Rubber-Tyred Gantry) and STS (Ship-to-Shore) cranes, has significantly contributed to reducing environmental footprint while enhancing operational efficiency.

By leveraging advanced technology and innovative solutions, YILPORT Iberia has optimized port operations and prioritized environmental conservation and social responsibility. This award serves as a testament to YILPORT's unwavering commitment to sustainable development and sets a notable standard for the industry.



YILPORT Liscont, Portugal



Diogo MARECOS
Regional Corporate Affairs
& Industrial Relations Director

YILPORT Liscont, Portugal

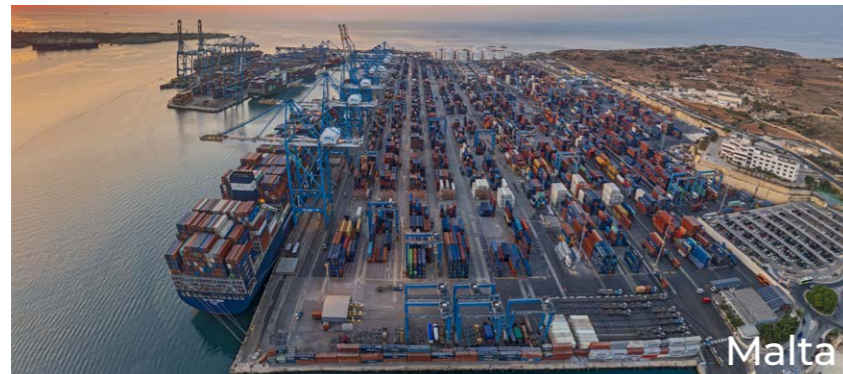


MEDITERRANEAN REGIONAL INFORMATION

Located in Mediterranean region, YILPORT's Mediterranean terminals offer hubs and home terminals for container, general - bulk and Ro-Ro operations, and provide easy access to roads and logistics services. YILPORT Taranto SCCT, Malta Freeport, Šibenik are utilised with bonded and non-bonded areas, warehouses and supported by end-to-end logistic services.



Taranto



Malta



Šibenik

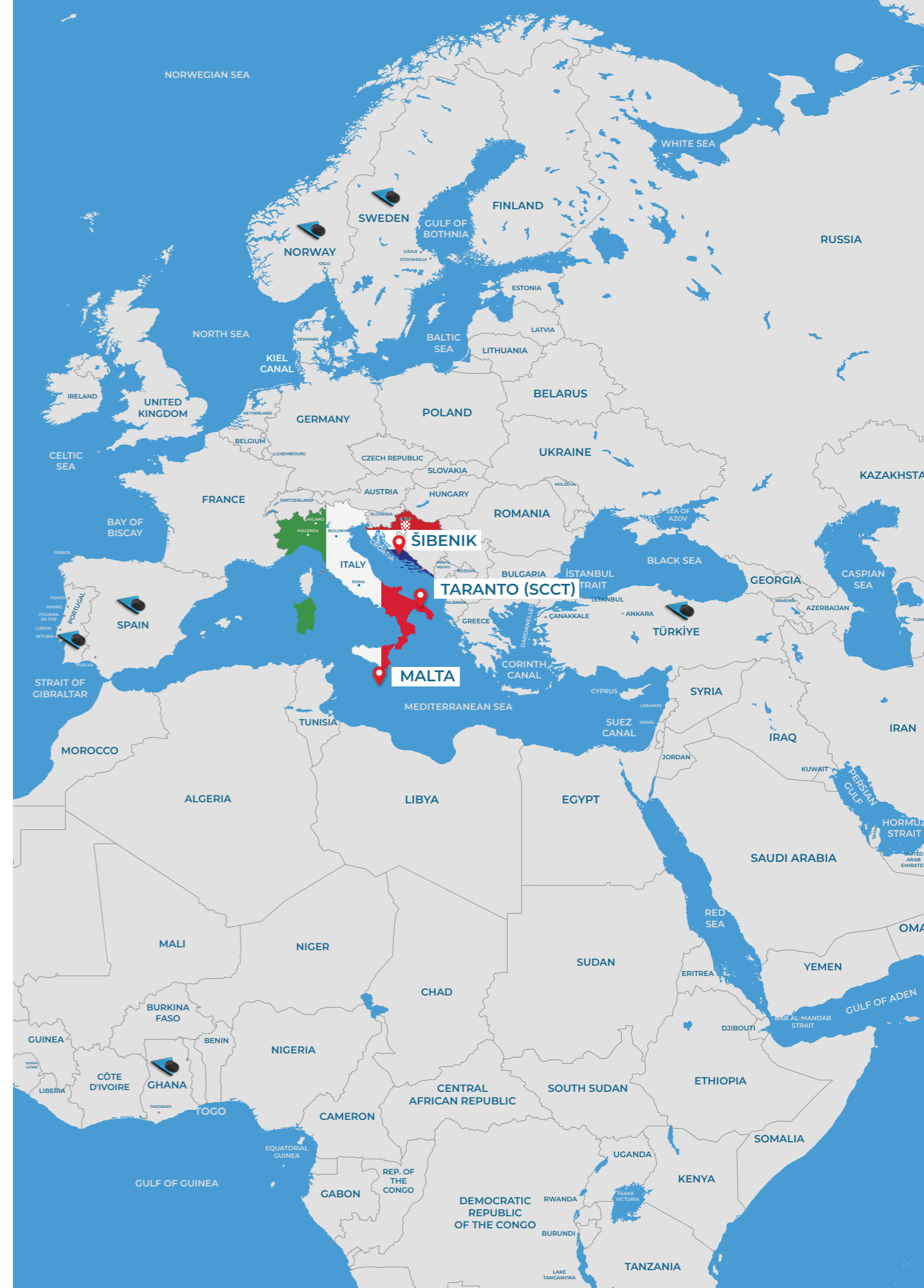
Q1 - 2024
Regional
Throughputs



Container
720,037
TEUs



General Cargo
99,606
TONs



YILPORT Holding Mediterranean Region Sales and Marketing Responsibles

YILPORT Taranto San Cataldo
Container Terminal

Taranto Local Sales:
sm@yilport.com

Head Office Contact: Sales & Marketing
sm@yilport.com

Malta Freeport Terminal:
marketing@maltafreeport.com.mt
www.maltafreeport.mt





YILPORT Malta (MFTL), Malta



MFT Invests in Greener Operations

Malta Freeport Terminals is committed to enhancing the environmental sustainability of its facilities, with a focus on greener operations. This year, the Terminals are taking significant steps towards this goal by upgrading their equipment fleet with more environmentally friendly units. In a focus on greener operations, a recent contract has been awarded to Terberg (Netherlands) for the acquisition of four electric industrial tractors.

These cutting-edge units will feature three high-capacity battery packs, each providing a power output of up to 222kWh. Additionally, they will be equipped with a Thermal Management System (TMS) to regulate battery temperature, allowing for operation in extreme temperatures ranging from -30°C to +50°C, ensuring their suitability for global utilization.

Malta Freeport Enhances Safety Culture with IOSH Training Program



Malta Freeport prioritizes workplace safety and is enhancing its culture through an IOSH training program. To further this commitment, MFT management and supervisors are currently participating in a comprehensive Institution of Occupational Safety and Health (IOSH) training program. This initiative will eventually extend to the entire workforce.

The IOSH training program is specifically designed to equip participants with the knowledge and skills necessary to identify and manage health and safety risks within the workplace. Key areas covered in the training include risk assessment, hazard identification, emergency procedures, and legal compliance.

The Malta Freeport Terminal is dedicated to integrating safety principles into its daily operations, ensuring a safer working environment for all employees.

Malta Freeport Attended “Showcase Maritime Malta”



MFT actively participated in the 'Showcase Maritime Malta' event, hosted by the Malta Maritime Forum and the Malta Business Network UK. Held at the esteemed International Maritime Organization (IMO) Headquarters in London on February 27, this initiative provided a valuable platform for the Maltese delegation to network with maritime professionals and practitioners based in London. Notable figures from the maritime industry addressed the attendees, further enhancing the significance of the event.



Malta Freeport Supports Puttinu Cares and Local Communities

MFT donated to the Puttinu Cares Foundation, a children's cancer support group. The contribution was made through staff-prepared meals sold to MFT staff and extended to other organizations.

Malta Freeport aims to help with accommodation expenses for patients undergoing treatment abroad.

Additionally, they donated 300 bags of essential food items to local charities serving those who need them. Their belief in businesses uniting for noble causes underscores their commitment to positive community impact.

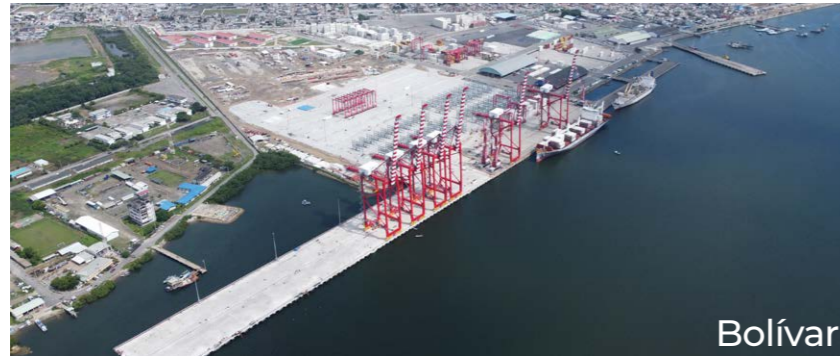
Malta Freeport Inaugurates Multi-Storey Car Park for Community Use

In alignment with its commitment to address the needs of the nearby residential community, Malta Freeport has collaborated with the Government of Malta to construct a multi-storey car park adjacent to the Freeport entrance, designated for residents' use. The multi-storey car park was recently inaugurated by Hon Minister Silvio Schembri, Minister for the Economy, Enterprise, and Strategic Projects.



LATAM REGIONAL INFORMATION

Located in Latin America region, YILPORT's multipurpose terminals offer the best solutions, at different coasts of Ecuador, Peru and Guatemala in the hearts of industrial zones. The terminals are closely connected to main highways offering easy access. YILPORT Puerto Bolívar, TPE Paíta, and YILPORT Quetzal terminals are utilized with bonded and non-bonded areas, warehouses and supported by end-to-end logistic services.



Bolívar



Quetzal



Paíta

Q1 - 2024
Regional
Throughputs



Container
176,720
TEUs



General Cargo
465,362
TONs



Liquid
12,654
M³



YILPORT Holding Latam Region Sales and Marketing Responsibles

Head Office Contact: Sales & Marketing
sm@yilport.com

Region Contact: Carolina BURGOS
carolina.burgos@yilport.com





Alfredo JURADO, Regional GM Corporate Affairs
Bolívar Sales Team with CIPEM Authority

YILPORT Puerto Bolívar Attends CIPEM Annual Breakfast

YILPORT Puerto Bolívar participated in the annual breakfast titled “Close to You” hosted by the Chamber of Industries, Production, and Employment of Cuenca (CIPEM).

The gathering provided a valuable networking platform for members to discuss the challenges and opportunities confronting the Southern Region of Ecuador this year along with insights into the economic outlook for 2024.



Alfredo JURADO, Regional GM Corporate Affairs
with YILPORT Puerto Bolívar Employees

YILPORT Puerto Bolívar Celebrates 7th Anniversary

YILPORT Puerto Bolívar, a leading player in Ecuador's marine trade, celebrated its 7th anniversary on March 1, 2024, at Hotel Oro Verde, attended by 150 dedicated employees.

As the anniversary celebration concluded, there was a deep sense of pride in YILPORT Puerto Bolívar's key role in Ecuador's marine trade. With a legacy of excellence and a commitment to innovation, the terminal eagerly anticipates sustained growth and success in the future.

As YILPORT, we celebrate seven years of excellence, and wish many more prosperous years ahead for YILPORT Puerto Bolívar!

The Multipurpose Terminal in The South of Ecuador

Ready to Serve with
6 STS and 18 RTG
Cranes

Puerto BOLÍVAR



- Closest to main **banana production farms** in south of Ecuador
- **Efficient solutions** for all vessel and cargo services
- **Shortest channel access**, only 30 minutes of travel

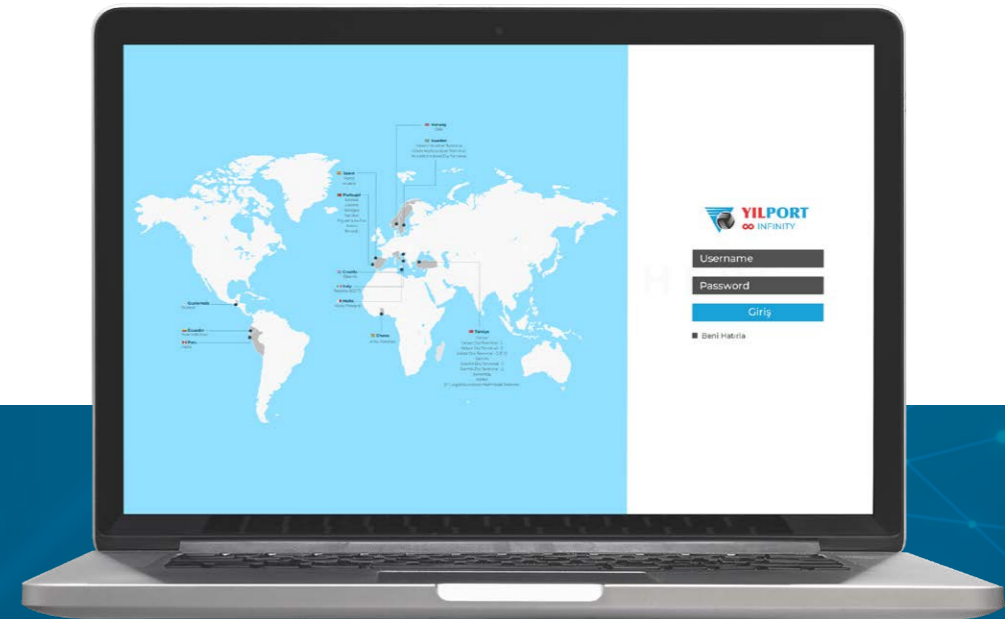
YILPORT LOGISTIC SERVICES



www.yilport.com

Privilege Becomes E-Standard!

YILPORT is fully committed to using its all endeavors for providing the utmost service with the in-house expertise.



Scan QR Code to Discover

Infinity Community Access Portal Offers:



Elevated operational productivity



Enhanced service delivery



Transparent and streamlined planning processes



Accelerated throughput times



Optimal utilization of information



Adaptable and customizable reporting features

<https://infinity.yilport.com>



The Competency Adventure Program was Concluded Successfully

In 2023, YILPORT initiated the "Competency Adventure" program within its Human Resources department to enhance awareness of our Core Competencies. This initiative concluded successfully in early 2024. Throughout the program, we curated a series of webinars featuring expert speakers, comprehensive e-trainings, and additional content. The program's success, marked by a notably high satisfaction rate, was celebrated with book awards, underscoring our commitment to continuous learning and development.



YILPORT Taranto (SCCT) Embraces Bookcrossing: Promoting Reading and Sustainability

YILPORT Taranto (SCCT) understands the value of sustainability, especially in promoting reading. Bookcrossing, where people leave books in public for others to enjoy, helps create a global library for everyone.

To support this, YILPORT Taranto (SCCT) started a bookcrossing initiative. We've set up a shared bookcase for all employees.

The rules are simple: 1. Share the book with others; 2. Return it after reading; 3. If you keep a book, replace it with another.

Employees have enthusiastically embraced this initiative, showing their commitment to fostering a culture of reading, sharing, and sustainability at our workplace.

YILPORT Taranto (SCCT) Invests in Employee Training with English and Excel Courses

YILPORT Taranto (SCCT) seized the opportunity to provide local employees with training in both English and Excel. While Excel training was primarily aimed at blue-collar operators, English training was offered at two different proficiency levels.

What makes this initiative particularly noteworthy is that it was made possible through financed funds, highlighting YILPORT's commitment to investing in the skill development of our workforce.



YILPORT Iberia Celebrated its 8th Anniversary

On February 19th, YILPORT marked 8 years since its establishment in the Iberian Peninsula, a significant milestone deeply embedded in our DNA.

To honor this special occasion, all YILPORT Iberia employees gathered and celebrated our collective achievements thus far and the promising journey ahead.



YILPORT Celebrated International Women's Day!

YILPORT celebrated International Women's Day at its global ports with impactful initiatives.

YILPORT Taranto (SCCT) female employees explored history at the National Archaeological Museum. YILPORT Puerto Bolívar supported the Inclusive World Foundation and honored female employees with gifts. YILPORT Gebze highlighted women's dedication, and at YILPORT Iberia, each woman received a token of gratitude. YILPORT is dedicated to promoting equality, diversity, and inclusion while celebrating the strength of women on a global scale.





YILPORT Puerto Bolívar Celebrates Birthdays

YILPORT Puerto Bolívar took a moment to honor the birthdays of our valued team members born in January and February. This celebration reflected our appreciation for their contributions and a chance to share in their joy. We extend our warmest wishes to all who celebrated their birthdays during this period, hoping for continued success and fulfillment in the year ahead.



YILPORT Gebze Attended Kocaeli University Career Days

YILPORT Gebze participated in the 8th Career Days organized by Kocaeli University Maritime Faculty

YILPORT Gebze recently attended to the 8th Career Days organized by Kocaeli University's Maritime Faculty. During the event's 2nd Session, which spanned over 2 days with a total of 6 sessions, representatives including Celal KILIÇSAYMAZ, Senior Manager of Human Resources, Veysel SEKİN, Operations Chief, and Naki AKPINAR, GLC Berth Planning Specialist, explained YILPORT Holding's important role in the sector. They shared valuable insights from their personal career stories, engaged with university students, and answered questions.



YOUR **GLOCAL** SOLUTION PARTNER

YILDIRIM is active in 9 industries; **metals and mining, port management, fertilizers and chemicals, energy, shipping and logistics, international trade, energy commodities, construction and real estate, financial investments.**



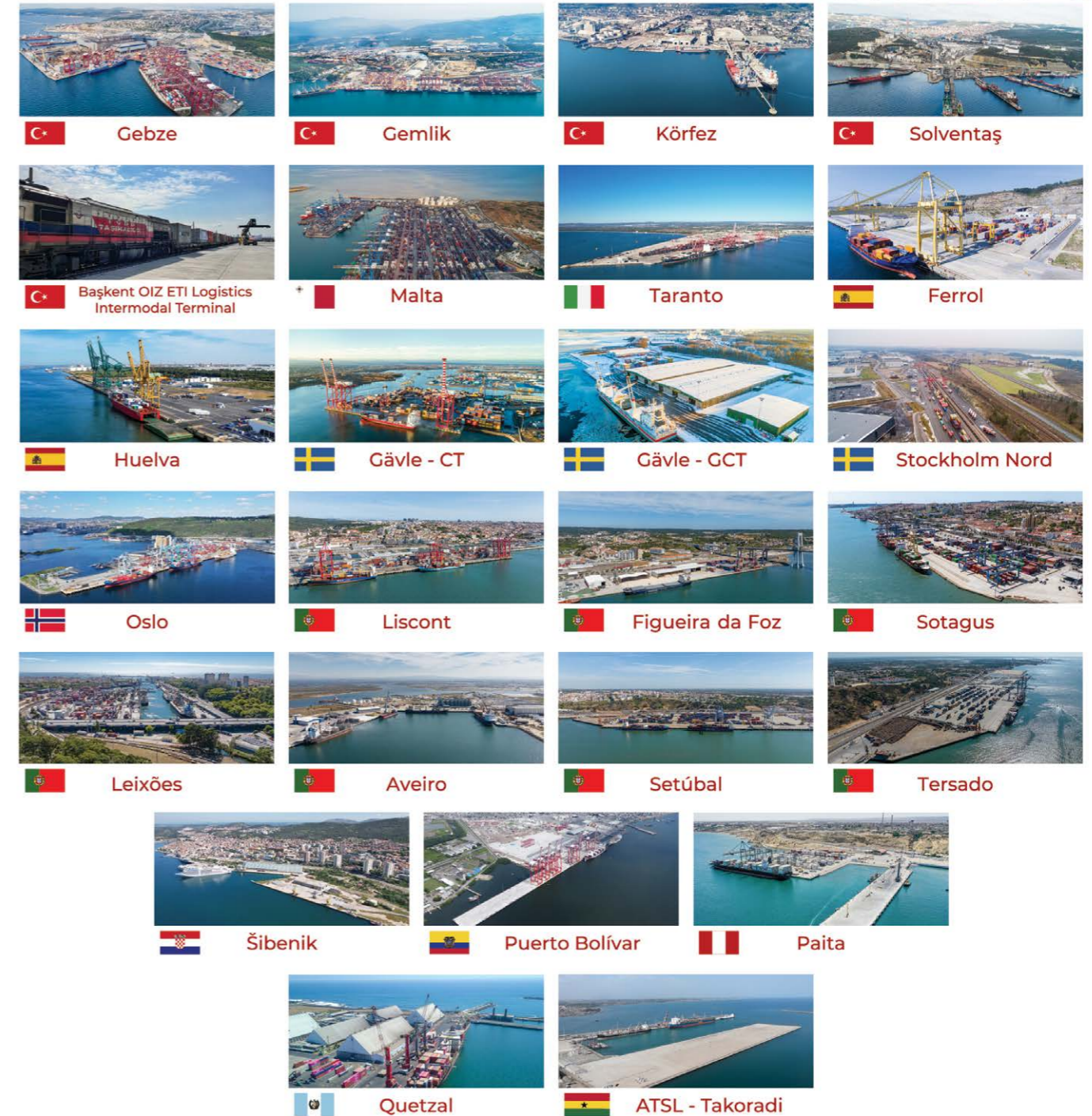
The key to success is in our DNA

YILPORT HOLDING

World's 12th Biggest Container Terminal Operator*

Game Changer in Port Operations & Container Terminal Management

12 COUNTRIES
25 PORTS & TERMINALS
7 DRY TERMINALS
+7,000 EMPLOYEES



*Drewry Global Container Terminal Operators Ranking (2023)



www.yilport.com





The YILPORT Global Logistics Center is not only a technological powerhouse but also a hub for fostering efficiency and the exchange of best practices among terminals.



Efficiency
Through Centralization



Knowledge Exchange
& Collaboration



Data Control
& Reporting



Global Deployment
of Best Practices



Planning Critical
Aspects of Operations



Customer Service for
Customer-Centric Approach



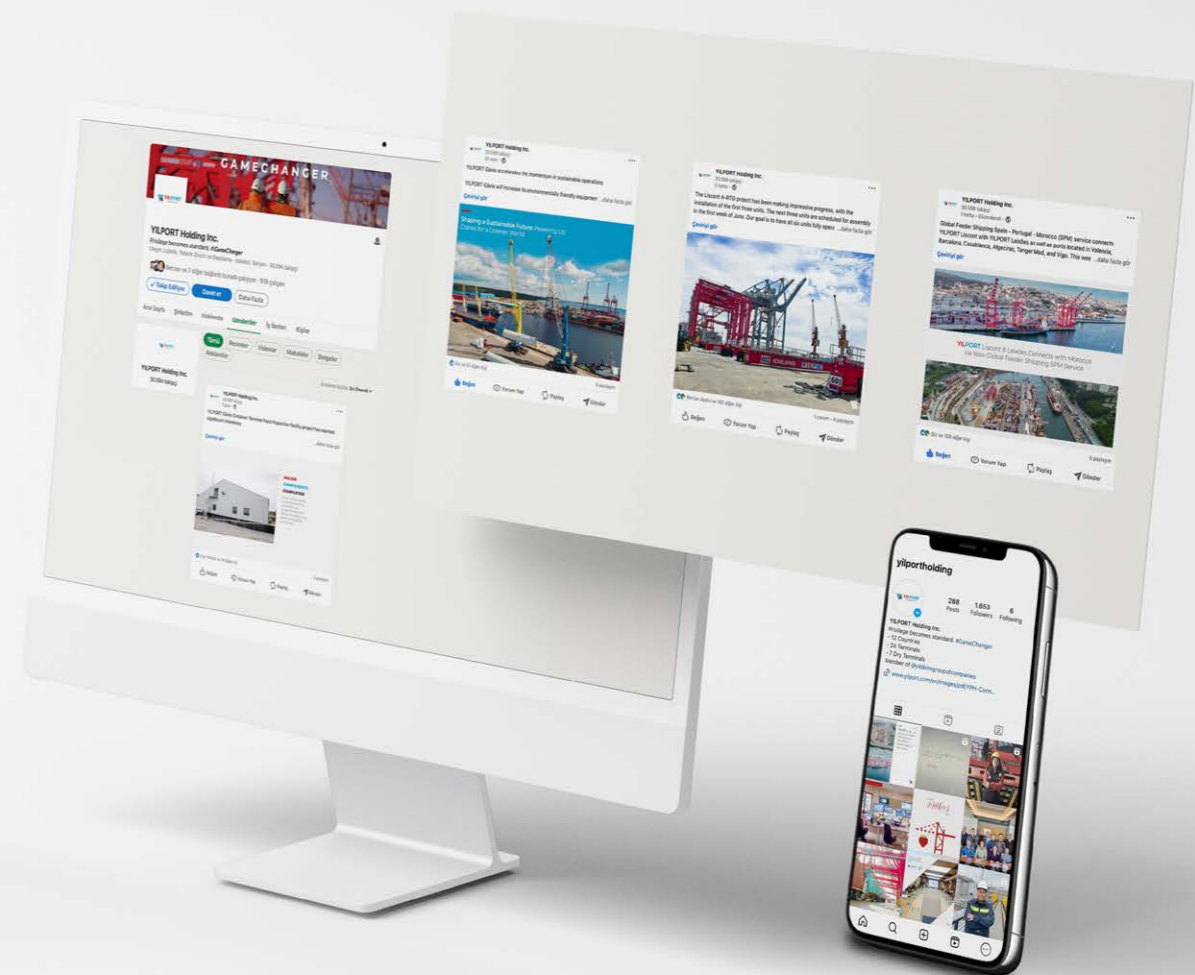
Continuous Improvement
by Advanced Technologies



Harnessing Employee
Expertise



Operational Efficiency
Through Optimization



FOLLOW US ON

Instagram

#yilport



LinkedIn

#yilport





GAMECHANGER

IN PORT OPERATIONS AND MANAGEMENT

Global Reach

YILPORT Holding was established in August 2011 to combine the port and container terminal operations of YILDIRIM Group under one roof.

The Holding has a portfolio of 5 Terminals in Türkiye, 7 in Portugal, 2 in Spain, 2 in Sweden, 1 in Norway, 1 in Malta, 1 Italy, 1 in Croatia, 1 in Peru, 1 in Ecuador, 1 in Guatemala, and 1 in Ghana.

Also ETI Logistics and Transitex, global logistics and forwarding companies are part of YILPORT portfolio.

YILDIRIM Group



YILPORT Holding

