

CONNECTION

YILPORT HOLDING

STAY CONNECTED



YILPORT's success in 2023 played a vital role in keeping the maritime sector moving globally. We are committed to helping our customers grow in 2024.



4

CHAIRMAN & CEO
ROBERT YÜKSEL YILDIRIM'S
MESSAGE

6

2023 HIGHLIGHTS

8

LUIS CANTO CHIEF
TECHNICAL OFFICER
TOPTALKS INTERVIEW



HOLDING

Chairman & CEO Robert
Yüksel YILDIRIM's
Message **4**

2023 Highlights **6**

01**NORDIC**

YILPORT Gävle
Electrifies Two
Mobile Harbor
Cranes

20

YILPORT Oslo
Offers Innovative
Solutions for
Car Logistics

21**03****MEDITERRANEAN**

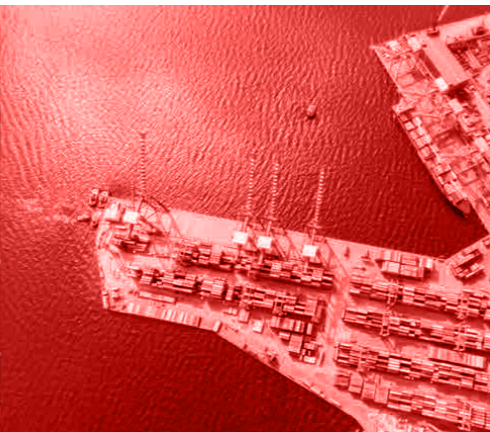
Malta Freeport Sets
Record on CMA CGM
Palais Royal LNG Ship **36**

MSC Mette - the
Largest Containership
ever to Call Malta **37**

05**PEOPLE**

YILPORT Nordic
Develops Leadership
& Management
Skills with LeadZone **48**

Competency
Adventure
at YILPORT Holding **49**

07**02 TÜRKİYE**

YILPORT Türkiye
Contributes to the
Prosperity and Elevates
the Success of the
National Economy **14**

04 IBERIA

The Best Container
Terminal Operator
in Portugal
YILPORT Leixões **28**

YILPORT Huelva
Connects with
the Canary Islands
in Ro-Ro Operations **30**

06 LATAM

YILPORT's Investment
to Develop the Biggest
Port in Ecuador **42**

YILPORT Puerto Bolívar
Attended the Border
Committee **44**

CONNECTION MASTHEAD

Executive Editor Ece YAVUZ
Assistant Editor İlayda LEBLEBİCİOĞLU
Designers Atakan ÖZEL | Ece YAVUZ
Guest Editors Kemal Ekin AYSEL



Chairman & CEO Message



YILPORT's success in 2023 played a vital role in keeping the maritime sector moving globally. We are committed to helping our customers grow in 2024.

Robert Yüksel
YILDIRIM



Despite the challenges in the maritime industry, YILPORT has demonstrated resilience, adaptability, and a commitment to its targets with a focus on new terminal growth, continuous improvement on the portfolio, and a customer-centric approach.

Being an agile company, we prepared our 7-year business plan in 2023 to ensure the sustainable future growth of YILPORT. The new business plans are already in motion to propel YILPORT as the game-changer of the industry.

Our global footprint expanded into Croatia and Ghana, showcasing the company's execution of its commitment, and closing 2023 with another dry terminal in Türkiye, to be inaugurated as Eti Logistics Ankara Intermodal Terminal. 25-year operating agreement with Başkent OIZ in Ankara underline our commitment to fostering strong growth.

We continued modernization at YILPORT Liscont as the first phase is completed. We added 4 new quay cranes and upgraded RTG blocks leading to a substantial increase in volume. Puerto Bolívar completed its second phase and extended its berth. Automated RTG project in YILPORT Gävle and the extension of digitalization initiatives in YILPORT Leixões and YILPORT Liscont terminals continued.

YILPORT's core customer-centric approach has resulted in a 7% growth in business volume in 2023. Global investments in cargo-specific warehouses, equipment, and process improvements also add to the ability of YILPORT to attract and retain cargo towards growth.

As YILPORT concluded a successful year, the company remains steadfast in its pursuit of being a global leader in port operations and reaching its top 10 target. The achievements of 2023 underscore YILPORT's commitment and that the leadership has set a path that is ready for continued success in the dynamic maritime industry.



YILPORT Management Gathered at Annual Meeting



YILPORT Holding 2023 Annual Meeting was a great opportunity to gather regional and global heads to discuss the performance and future of the company. The meeting covered several topics, including the global economy, shipping outlook, digitalization, and automation, operational excellence, and organizational development.

Robert Yüksel YILDIRIM, Chairman and CEO of YILPORT Holding, shared his insights on the future of the company. Mr. YILDIRIM the importance of innovation, sustainability, operational excellence, and dedication to teamwork. The meeting also helped strengthen the company's culture and build employee engagement.

We are charting our course with the motto of 'Game Changer' to bridge success by connecting beyond boundaries to drive sustainable growth and realizing our collective aspirations in an ever-evolving global landscape.

2023 HIGHLIGHTS

GAMECHANGER



ATSL - Takoradi

Eti Logistics Ankara Intermodal Terminal

YILPORT Šibenik

YILPORT Liscont

YILPORT Puerto Bolívar

YILPORT Gävle

YILPORT Sotagus

TERMINAL ACQUISITION

- YILPORT Africa becomes 6th region of YILPORT
- YILPORT added the port of Šibenik as the 3rd terminal in the YILPORT Mediterranean Region
- YILPORT signs for Eti Logistics Ankara Intermodal Terminal

NEW INVESTMENTS

- YILPORT'S new Partner in YILPORT Sotagus
- YILPORT Liscont modernization project Phase #1 investment is completed
- YILPORT Puerto Bolívar Phase #2 berth construction completed
- Automated RTG Concept Becomes Standard



“ Luis CANTO Chief Technical Officer TopTalks Interview



Please scan QR
code for the Full
Episode.



LUIS CANTO

YILPORT Holding Chief Technical Officer

Can we have background information on you?

I am from Argentina. I have been married for 30 years with two children. Well, they are not children anymore. One son is 25 and has a master's degree in electrical engineering. My daughter is 23 and has also a master's in artificial intelligence, they are both studying in England. I am an electronics engineer by profession. I studied in Argentina, and I have been working in many different industries. But for the last 20-25 years, I have been working in ports. I have spent 16 years in Southeast Asia, based in Malaysia in Kuala Lumpur while

visiting and taking care of many ports around that area, all the way from New Zealand, Australia, Korea to Japan to Hong Kong, to also to Oman, Pakistan, Singapore, and Philippines.

Basically, all over the world. You are global.

When I was there, I received an invitation from YILPORT to join the company, to be in one of your ports in South America in Northern Peru. It's a very nice company. So, I decided to join you. I worked for three years in South America, Peru in the Paita terminal. And then I am here as, as the Chief Technical Officer, which is a big honor for me.

We are lucky to have you in our headquarters as well. How did you find Istanbul?

Well, this is a lovely and big city. I like big and multicultural cities; you find history in every corner here in the city. But the best part of Istanbul is the people and the Turkish people. I found that I didn't know you very well before, but I found that you are and you have a big patriotism, a family oriented. And the most impressive of all is that you are passionate. You are passionate about everything. You are passionate when you go to see football or a concert or in the street, make food, or even for driving. Driving is about, everybody takes passion even driving. So yes, I like and enjoy it.

Do you have any favorite Turkish dishes you have discovered?

My favorite one from all of them is that this is not a dish, it is a dessert, but it is not even a dessert. For me, it is a piece of art, the baklava and all the related desserts and I enjoyed it very much. I say that it is not a dish, it is a piece of art.

With pistachio or walnut?

Pistachio is my favorite. I also enjoy all the other dishes there, the doner, and the kebab, they are very nice, but desserts are my favourites.

Could you briefly explain how the technical side of YILPORT is coordinated all over the world? How do you coordinate these installations?

Well, we say we are a global company. We have a presence in Asia, Europe, Africa, South America, and Central America. So, we have around 25 terminals. 24, 25 is more coming. But this transition is we have local ports, but a central department, a central system. And this is quite good because we can organize and get the best of each of the ports. We have



YILPORT Liscont

our standard procedures, and our standard methods to take care of our equipment. We try to monitor and support all our terminals from here. YILPORT has grown very fast. But we are standardizing here from everything through here and having control together with people. The technical jobs are all with people.

How do you manage this kind of big data and equipment?

This is something also challenging not only because of the data but also because, the technical department, is a service department because we need to have our equipment and our installations ready for operation. We need data from all the partners in the operation. We need data from commercial, we need data from finance. But, we have here a group of people, local engineers, data scientists who we have managed to standardize the way that port's reporting, we have managed to standardize what are their KPIs that we want to make sure that every port is okay, we prepare a monthly report, and by weekly meetings to see that everything is going on not to control, to support them. They are our ports; our business units are the ones that are interrelated with the customers. Thus, we need to give them our support. We need to compare their performance, and where we

can improve. From this data analysis, we can share this among them.

It seems a bit complex.

It is complicated, but not so much because we have a clear focus, and we work with all the other departments, and we'll have the same focus. We want to make YILPORT a successful company. We want to help and take very good care of our partners. And that's our motto says we want to be a "Game Changer".

Do we have forthcoming projects, or new equipment in the line?

This is something that maybe not everybody is aware of. YILPORT is a leader in automation. We have automated equipment, running standalone with monitoring from a central control, in many of our terminals. We have it in Gävle, Sweden. We are finalizing the commissioning now in Liscont-Lisbon. We are going to continue with Porto, Portugal. In addition to this equipment, we are also having more facilities. We are building a new cold storage in Puerto Bolívar to handle more cargo there to have consolidation, we are having scanners to add security and safety to the international transport.

It is not only about the equipment but also about the facility. We are adding more yards in some of our ports here in Türkiye to be able to handle more cargo and have a bigger capacity for the ports. We are growing everywhere in equipment, but also in our facilities, digitalization, and our team. As much as we specialize in container operations, we have very good terminals handling general cargo, and we have a modern terminal here in Türkiye, handling liquid cargo. We have very

efficient places handling general cargo, which is a complicated task, too.

What message would you like to send to YILPORT customers and business partners as the CTO of the company?

We are a company that we are growing. Again, we have it here in our hearts, we have it here in our minds all the time. Our motto is we are a Game Changer, and this is what we are trying to do. So, I would tell all our customers, come to YILPORT whatever it is, your need, whatever it is, your requirement, whatever your problem, we will be able to solve it. We will be able to take care of your cargo and give you their best service. We still have a lot of capacity in our ports. We are putting our equipment like a state-of-the-art to give the best services to how there is productivity. So, again, even though we are big, we are still a company that cares about our customers. We face them one to one. We take care of their problems, one to one. So come to YILPORT, you are going to be happy, and we're going to serve you very well.



"We have it here in our hearts, we have it here in our minds all the time".



What's Next?

By 2030, YILPORT aims to rank among the TOP 10 port operators in the world.

we're making every move count.

TÜRKİYE

- 2005 - GEBZE
- 2012 - ROTAPORT
- 2012 - GEMLİK
- 2016 - SOLVENTAŞ
- 2023 - BAŞKENT OIZ

MALTA

- 2011 - MALTA FREEPORT

SWEDEN

- 2014 - GÄVLE
- 2014 - STOCKHOLM NORD

NORWAY

- 2014 - OSLO

PORTUGAL

- 2016 - LISCONT
- 2016 - SOTAGUS
- 2016 - AVEIRO
- 2016 - LEIXÕES
- 2016 - FIGUEIRA DA FOZ
- 2016 - SADOPOINT
- 2016 - SETÚBAL
- 2016 - TERSADO

SPAIN

- 2016 - HUELVA
- 2016 - FERROL

PERU

- 2016 - PAITA

ECUADOR

- 2016 - PUERTO BOLÍVAR

GUATEMALA

- 2018 - QUETZAL

ITALY

- 2018 - TARANTO

GHANA

- 2023 - ATSL-TAKORADI

CROATIA

- 2023 - ŠIBENIK

...



www.yilport.com



TÜRKİYE REGIONAL INFORMATION

Located in Marmara region of Türkiye, YILPORT's multipurpose terminals offer the best solutions, located at different coasts in the hearts of industrial zones. The terminals are closely connected to main highways offering easy access. YILPORT Gebze, Gemlik, Körfez and Solventaş terminals are utilized with bonded and non-bonded areas, warehouses and supported by end-to-end logistic services.



Gebze



Gemlik



Solventaş



Körfez

Q4 - 2023 Regional Throughputs



Container
1,223,567
TEUs



General Cargo
3,463,037
TONs



Liquid
3,573,000
M³



Ro-Ro
156,220
CEUs



YILPORT Holding Türkiye Region Sales and Marketing Responsibles

Head Office Contact: Mr. Ertan OCAK
ertan.ocak@yilport.com

Region Contact: Mr. Emre ATAY
emre.atay@yilport.com

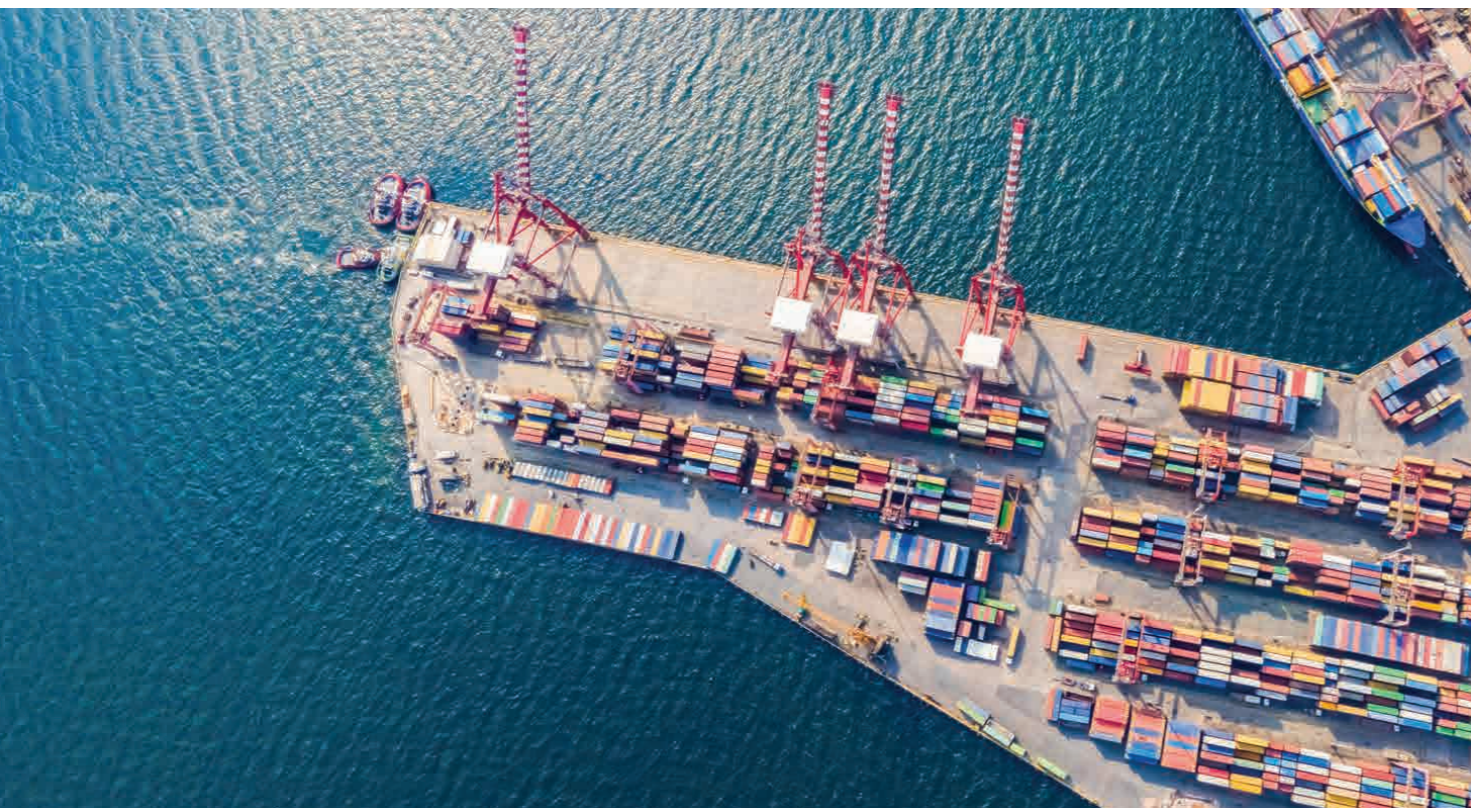
Solventaş Local Sales:
General Manager: Ms. Elif ARTAN
elif.artan@solventas.com.tr

Sales Manager: Mr. Berk DELİPINAR
berk@solventas.com.tr

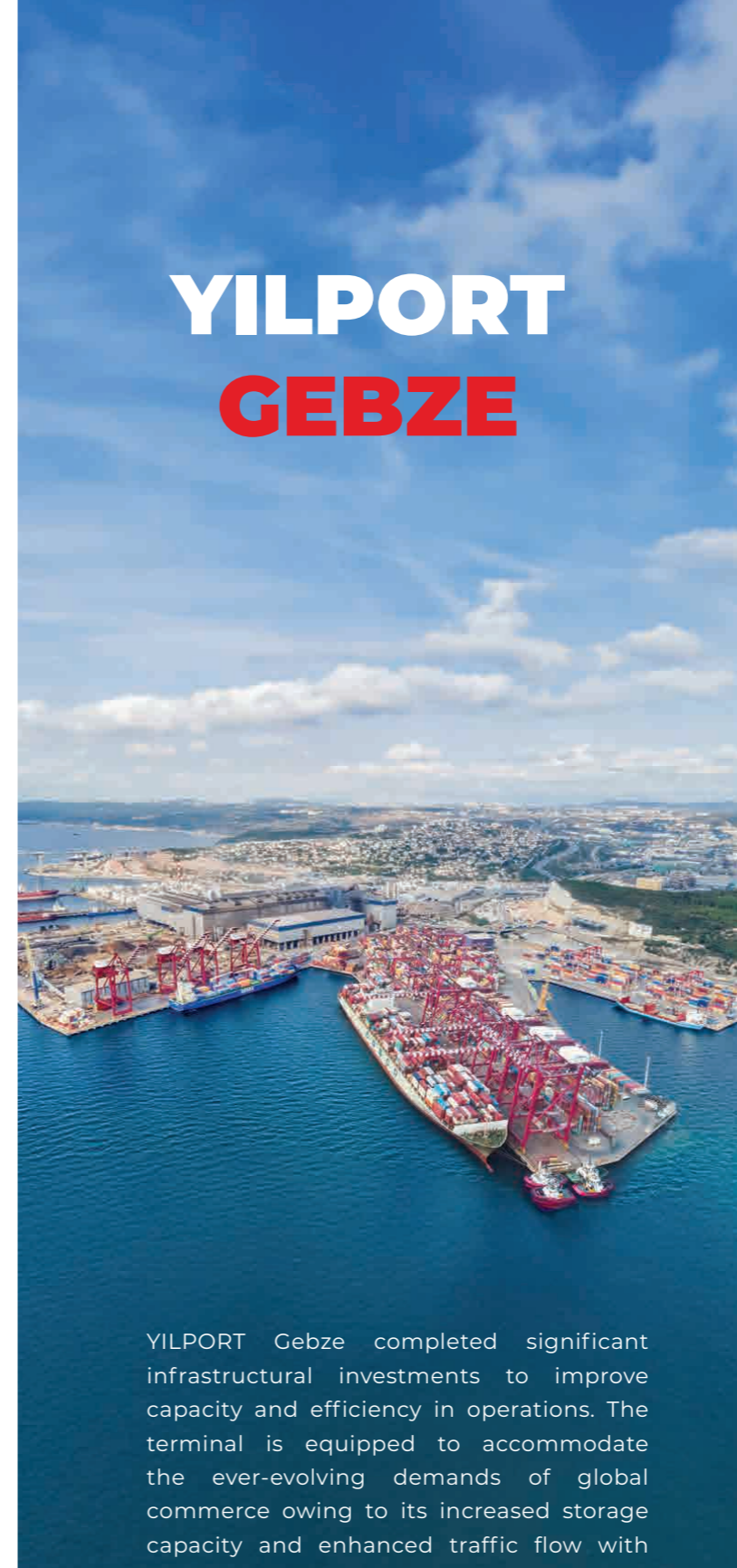


YILPORT Türkiye Contributes to the Prosperity and Elevates the Success of the National Economy

The Marmara region of Türkiye has become a crucible of economic growth, driven by a dynamic array of industries that form the backbone of progress. This dynamic gateway region has used its strategic location, and infrastructure to achieve exceptional development. The various growth drivers of the Marmara region range from heavy industry to cutting-edge technologies. In 2023, YILPORT Türkiye had remarkable achievements across its terminals, establishing its position as a pioneer in maritime logistics in the Marmara Region with its endeavors playing a significant role in enhancing the overall economic well-being and success of the country and enhancing competitiveness in global markets, by improving infrastructure, fostering innovation and development in operational aspects.



YILPORT GEBZE



YILPORT Gebze completed significant infrastructural investments to improve capacity and efficiency in operations. The terminal is equipped to accommodate the ever-evolving demands of global commerce owing to its increased storage capacity and enhanced traffic flow with railway connection as well as a new depot commissioned in 2023.

DEVELOPMENT

Railway works and connections have been completed, enabling the activation of Rail Connected New RTG Blocks. The construction of a new access road and Automated Gate is finished. Our terminal capacity has expanded by 105,000 TEUs with the addition of new container RTG blocks. Furthermore, the new pre-gate now accommodates 50 trucks simultaneously, elevating the gate capacity to 250 trucks per hour. Additionally, our newly operational inland empty depot, along with 35,000 m² of new yard space is now serving YILPORT Gebze customers.

BUSINESS-DRIVEN TECHNOLOGY PROJECTS

In 2023, YILPORT Gebze executed significant investments in both equipment and technology. On the technological front, the Gebze Road Construction Project achieved a milestone with the completion of a new auto-gate setup for 8 lanes and the cost-effective production of ABB kiosk models within Türkiye.

EQUIPMENT INVESTMENTS

- **5 units of 4x2 Terminal Tractors**
in January 2023
- **16-ton Diesel Forklift**
in March 2023
- **2 Reach Stackers**
in May 2023



YILPORT GEMLİK

SECTOR LEADER AWARD GOES TO YILPORT GEMLİK



YILPORT Gemlik, which has a 78% market share in the region, was awarded as the 'Sector Leader' in the 'Adding Value to the Economy' awards by the Bursa Chamber of Industry and Commerce thanks to its investments and achievements.

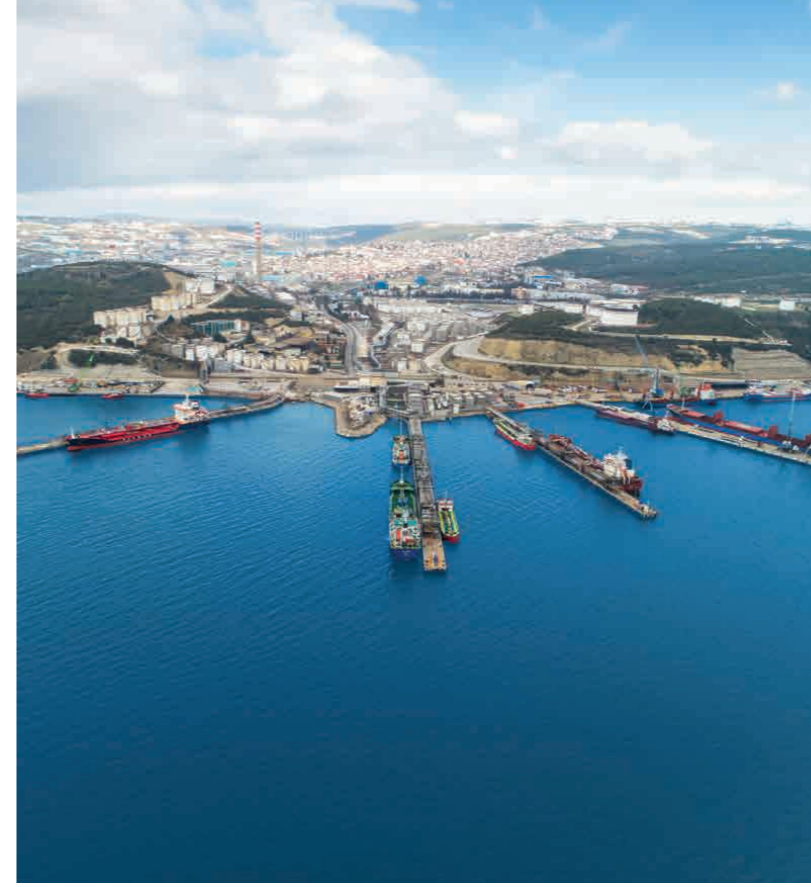
BUSINESS-DRIVEN TECHNOLOGY PROJECTS

Gemlik Crane OCR Phase 2, specifically tailored for the integration of new 4 STS (Ship-to-Shore) cranes.

EQUIPMENT INVESTMENTS

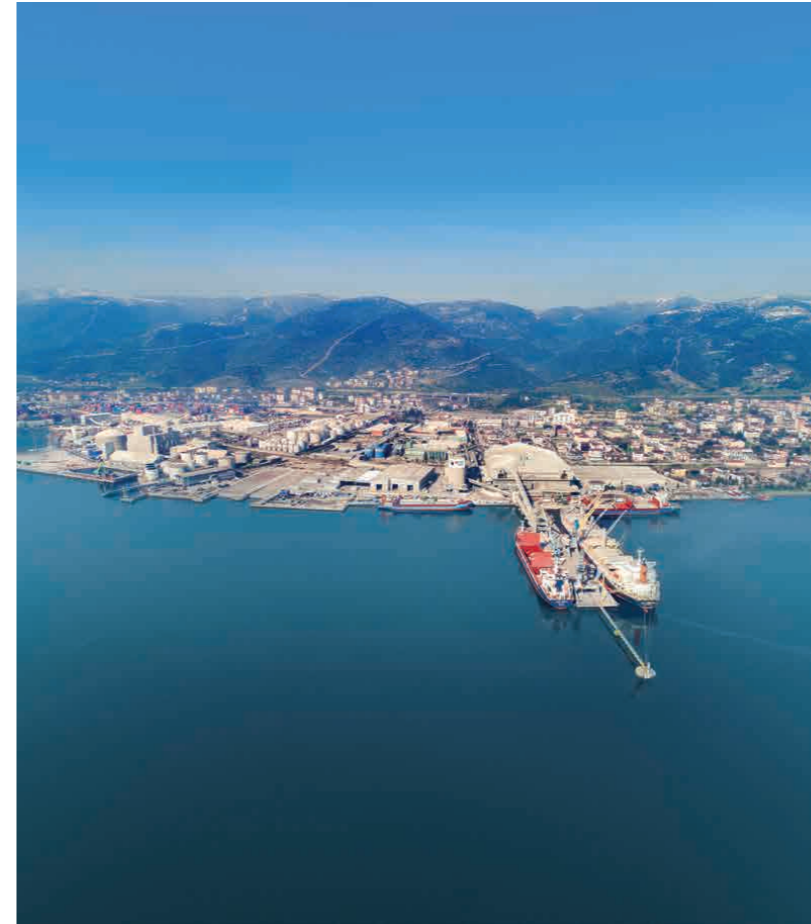
- **9 units of 4x2 Terminal Tractors**
in January 2023
- **1 Empty Container Handler**
in April 2023
- **2 Reach Stackers**
in May 2023

YILPORT Gemlik expert in project cargo handling and developing strong relationships with top players in the market pushed established new benchmarks for excellence, handled different types of general cargo products such as wind energy components, and actualized loading of luxurious yachts. Gemlik Terminal sustained its strong presence with its expertise in Ro-Ro operations.



YILPORT SOLVENTAŞ

YILPORT Solventaş, the largest and the most advanced liquid terminal in Türkiye, obtained the ISO 50001 certification, which reflects a commitment to reducing the consumption of energy and minimizing environmental effects, highlighting the company's dedication to sustainability.



YILPORT KÖRFEZ

The railway construction that will connect YILPORT Körfez to the national railway line has been completed and opened to the use of our customers by obtaining all necessary permits. We share the happiness of providing seaway connections to customers in surrounding provinces via railway connection.

YILPORT is committed to advancing the expansion and advancement of the Turkish marine industry. By prioritizing innovation, efficiency, and customer satisfaction, the organization is well-positioned to lead toward sustainable success in the future.

NORDIC REGIONAL INFORMATION

Located in Scandinavia region, YILPORT's multipurpose terminals offer the best solutions, at different coasts of Norway and Sweden in the hearts of industrial zones. The terminals are closely connected to main highways offering easy access. YILPORT Oslo, YILPORT Gävle and Stockholm Nord terminals are utilized with bonded and non-bonded areas, warehouses and supported by end-to-end logistic services.



Oslo



Gävle



Stockholm Nord

Q4 - 2023
Regional
Throughputs



Container
506,851
TEUs



General Cargo
1,587,317
TONS



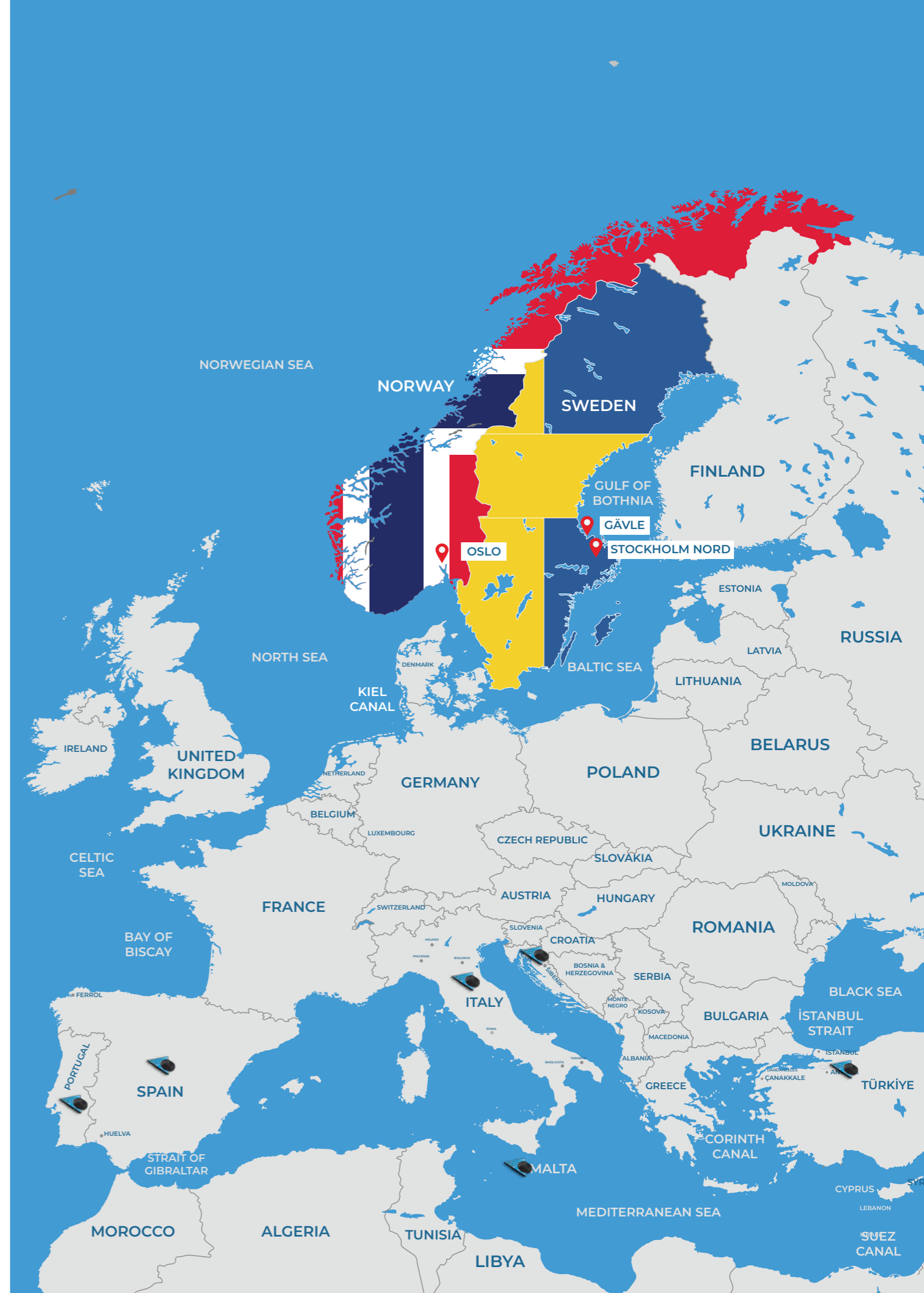
Ro-Ro
27,679
CEUs



YILPORT Holding Nordic Region Sales and Marketing Responsibles

Head Office Contact: Sales & Marketing
sm@yilport.com

Region Contact: Mr. Håkan BERGSTOM
hakan.bergstom@yilport.com





YILPORT Gävle Electrifies Two Mobile Harbor Cranes

YILPORT Gävle has taken a tremendous step forward in lowering its CO2 output by electrifying two of its mobile harbor cranes. It is a significant improvement, as the electrification will reduce the General Cargo terminal's yearly fuel usage by approximately 75%.

The electrification of these cranes indicates YILPORT's commitment to sustainability by investing in innovative solutions to reduce environmental impact and create a more sustainable future.

Electrifying mobile harbor cranes offers numerous benefits, including fewer CO2 emissions, reduced noise levels, and lower maintenance. By embracing this technology, YILPORT Gävle is paving the way for a zero-emissions future and setting a new standard of sustainability in the industry.

YILPORT Oslo Offers Innovative Solutions for Car Logistics



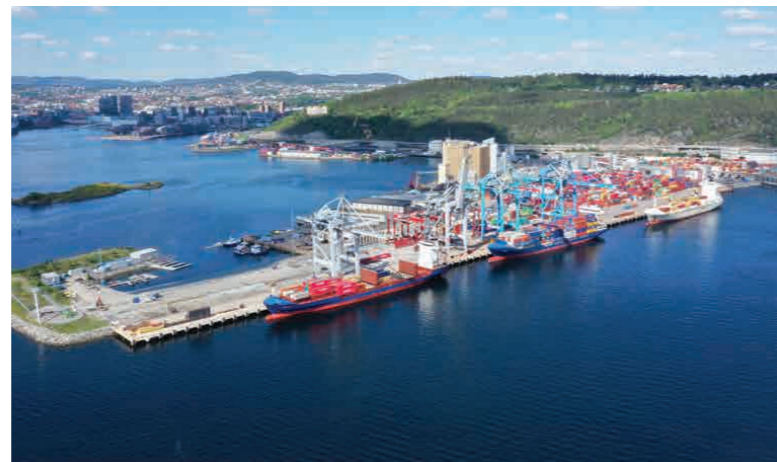
YILPORT Oslo has undertaken a remarkable collaboration to facilitate the unloading of car containers. The car imports in containers have seen a steady monthly increase throughout the year since starting in January.

YILPORT Oslo's flexibility in adapting to changing customer needs is evident in this efficient process. The collaboration occurred as the availability of Ro-Ro vessels declined, necessitating a solution for the customers' logistics, resulting in a shift to container vessels. In this operation, YILPORT Oslo is responsible for unloading containers and coordinates with another logistics partner that handles the transport by emptying the containers from cars.



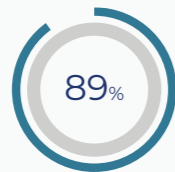


YILPORT Nordic to Progress in GRESB ESG Benchmark Assessment Results

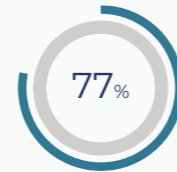


YILPORT Nordic continues its commitment to sustainability with notable outcomes in the annual GRESB ESG Benchmark Assessment. Over the past four years, the assessment has been a regular practice for YILPORT's Swedish entities, expanding last year to include Oslo, thus covering the entire Nordic portfolio.

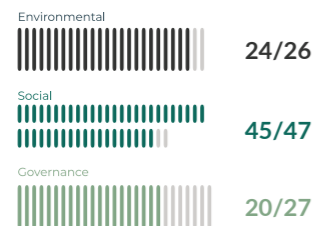
YILPORT Sweden stands 2nd among 7 companies in this year's GRESB ESG Benchmark in Transport Category: Port Companies / Europe with 89 out of 100.



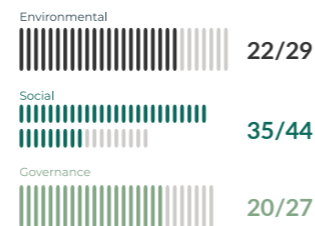
YILPORT Oslo is ranked 6 out of 7 in this year's GRESB ESG Benchmark in Transport Category: Port Companies / Europe. The Norwegian entity scored a total of 77/100.



Sweden ESG Breakdown



Oslo ESG Breakdown



YILPORT Gävle Doubles Up the Train Capacity



The railway expansion project at the YILPORT Gävle Container Terminal is completed, and the terminal is equipped with four railway tracks. The railway consists of four 300-meter-long tracks, a total of 1200 meters, making the terminal equipped to facilitate two full-length trains simultaneously. By doubling the number of tracks, YILPORT Gävle is taking a step forward in enhancing the operational capacity, promoting transfers from road to sea and railway. This investment supports the seamless flow of goods, reduces congestion, and provides even better services while meeting the future need and demand for intermodal transport. The project was started by YILPORT Gävle in early September and finished in November. The project has added two extra railway tracks, and now the container terminal will be equipped with four railway tracks leading into the terminal area. The railway previously had two 300-meter-long tracks. With the additional two tracks, the railway will reach 1,200 meters divided into four tracks. This investment aims to improve efficiency, reduce congestion, and provide better service.



Increased Railway Shuttles Between YILPORT Gävle and YILPORT Stockholm Nord

In response to growing imports channeled through Gävle towards the Stockholm region, YILPORT is enhancing its rail shuttle service that connects YILPORT Gävle and YILPORT Stockholm Nord. This enhancement entails an additional weekly departure, increasing the frequency from three to four departures per week.

This increased frequency of railway shuttles is made to meet the growing demand for efficient and reliable intermodal transportation services, while also benefiting businesses and industries relying on the transportation corridor between Gävle and the growing logistics area Stockholm Nord.

Effective from December, the new weekly departure will be on Friday, and the updated weekly schedule includes departures on Tuesday, Thursday, Friday, and Saturday.



IBERIA REGIONAL INFORMATION

Located in the Iberian Peninsula, YILPORT's multipurpose terminals offer the best solutions, at different coasts of Portugal and Spain in the hearts of industrial zones. The terminals are closely connected to main highways offering easy access. YILPORT Leixões, Liscont, Sotagus, Setúbal, Tersado, Figueira da Foz, Aveiro, Huelva and Ferrol terminals are utilized with bonded and non-bonded areas, warehouses and supported by end-to-end logistic services.



Q4 - 2023
Regional
Throughputs



Container
1,244,099
TEUs



General Cargo
1,914,895
TONs



Ro-Ro
52,439
CEUs



YILPORT Holding Iberia Region Sales and Marketing Responsibles



Head Office Contact:
sm@yilport.com

Region Contact: Mr. Diogo CASTRO
diogo.castro@yilport.com

THE BEST
CONTAINER
TERMINAL
OPERATOR
IN PORTUGAL



YILPORT Leixões has been recognized as Portugal's Best Container Terminal Operator at the prestigious CARGO AWARDS, organized by TRANSPORTES & NEGÓCIOS. This prestigious award recognizes the outstanding achievements that YILPORT Leixões demonstrated in the dynamic shipping and logistics industry.

THE LARGEST SEAPORT IN NORTHERN PORTUGAL, YILPORT Leixões proved its position as the Best Container Terminal Operator in Portugal which is a testament to YILPORT Leixões' commitment to delivering exceptional services and driving advancements with innovation within the industry.

YILPORT Leixões keeps supporting all endeavors for the economy of industrialized North Portugal and increases standards to sustainably serve the importers and exporters of a broader hinterland extending to the north, the east, and the south of the Iberian Peninsula with the utmost standard performance and state-of-the-art facilities.

About YILPORT Leixões

YILPORT Leixões is the largest seaport infrastructure in the north of Portugal. It is one of the most prominent marine terminals in the country. The port is one of the most competitive and versatile multipurpose ports in Portugal, representing 25% of the Portuguese seaborne foreign trade, and handling more than 18 million tons of commodities annually. The Port of Leixões, and accordingly its container terminal, is an integral part of the European port system.

Nuno David SILVA
Regional General Manager





YILPORT Huelva Connects with the Canary Islands in Ro-Ro Operations

YILPORT Huelva offers two Ro-Ro services that link with the Canary Islands by Balearia and Naviera Armas lines. While Balearia Lines provides three calls weekly with two vessels Marie Curie and Cadena; Naviera Armas Lines also offers weekly calls with the Volcán de Tinamar vessel.

YILPORT Huelva provides unstowing and stowage operations to handle any Ro-Ro shipment quickly and efficiently.

The terminal also carries out the exchange of containers (empty/full) via wheeled cargo platforms and Roll Trailers and between them and train platforms, exploiting all intermodal possibilities in the service within this context.

About YILPORT Huelva

YILPORT Huelva is a major center of privileged experience with connections to Extremadura, Western Andalusia, and the Seville region through high-capacity highways and national railway lines reaching inside the terminal.

YILPORT Huelva is the best choice with its easily expandable plot surface for reefer container stevedoring operations. The industrial zone is primarily based on agriculture and its various export products as well as fishing.

YILPORT Iberia Attends APAT Congress

YILPORT Iberia attended the 19th Portuguese Freight Forwarders Association (APAT) Congress as a Silver Sponsor. During the event, YILPORT Iberia Regional General Manager, Mr. Nuno David SILVA, delivered a presentation on 'The Freight Forwarder's Relationship with the Port Operator' as part of the "TALKAPAT – Economy and Logistics" panel.

During his speech, Mr. SILVA emphasized the dynamics of the collaboration between freight forwarders and port operators and the nature of their relationship. YILPORT Iberia's active involvement showcased its commitment to encouraging industry dialogue and driving positive change in logistics. The Annual APAT congress is a midpoint for professionals to exchange insights, address challenges, and stay informed about the latest freight forwarding and logistics trends.

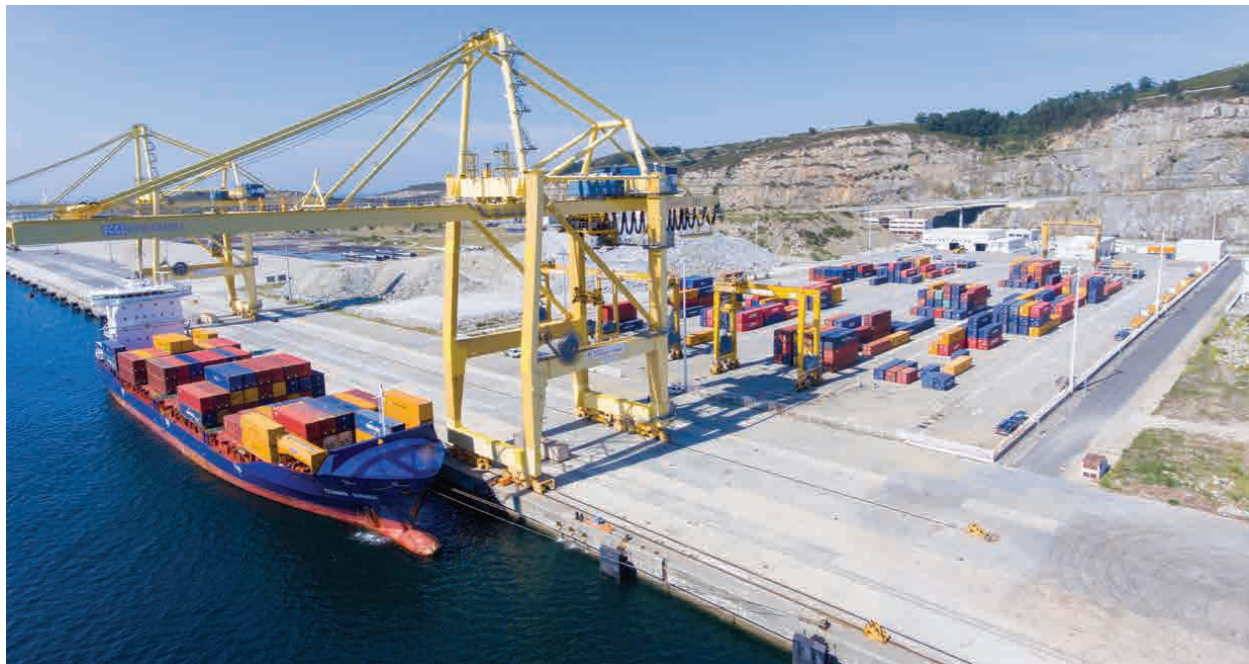




YILPORT Ferrol Welcomed Türkiye's Ambassador to Spain

YILPORT Ferrol hosted Türkiye's Ambassador to Spain Nüket Küçük Ezberci. During the visit, YILPORT Ferrol provided information to the guests about their project's status and promising efforts.

The visit ended with a tour of the terminal, which gave the ambassador and delegation first-hand information about operational capabilities and infrastructure.



About YILPORT Ferrol

YILPORT Ferrol offers the best location for container transshipment Atlantic operations feeding Spain, Portugal, France, Ireland, and Southern Britain with practically no deviation. Offering the deepest container terminal on the Atlantic Coast of Southwest Europe, the terminal has a quay wall of 1,200 meters, 20-meter-deep draft, and an annual container handling capacity of up to 500,000 TEUs in its 290,428 square meters of land area.

What's Next?

By 2030, YILPORT aims to rank among the TOP 10 port operators in the world

we're making every move count

TÜRKİYE

2005 - GEBZE
2012 - ROTAPORT
2012 - GEMLİK
2016 - SOLVENTAŞ
2023 - BAŞKENT OIZ
ETI LOGISTICS INTERMODAL

MALTA

2011 - MALTA FREEPORT

SWEDEN

2014 - GÄVLE
2014 - STOCKHOLM NORD

NORWAY

2014 - OSLO

PORTUGAL

2016 - LISCONT
2016 - SOTAGUS
2016 - AVEIRO
2016 - LEIXÕES
2016 - FIGUEIRA DA FOZ
2016 - SETÚBAL
2016 - TERSADO

SPAIN

2016 - HUELVA
2016 - FERROL

PERU

2016 - PAITA

ECUADOR

2016 - PUERTO BOLÍVAR

GUATEMALA

2018 - QUETZAL

ITALY

2018 - TARANTO

GHANA

2023 - ATSL-TAKORADI

CROATIA

2023 - ŠIBENIK

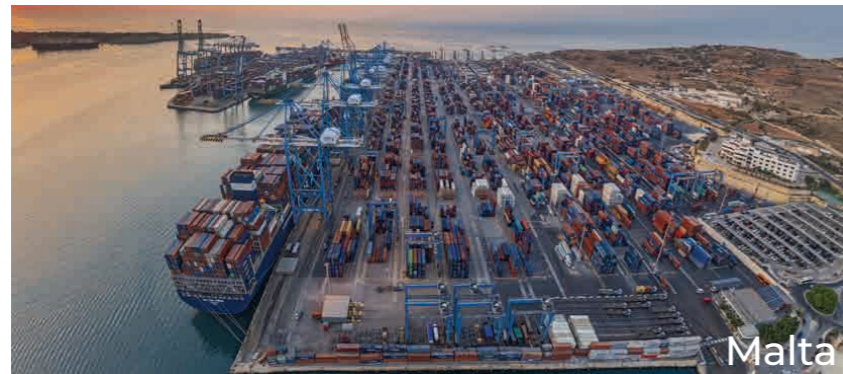
...

MEDITERRANEAN REGIONAL INFORMATION

Located in Mediterranean region, YILPORT's Mediterranean terminals offer hubs and home terminals for container, general - bulk and Ro-Ro operations, and provide easy access to roads and logistics services. YILPORT Taranto SCCT, Malta Freeport, Šibenik are utilised with bonded and non-bonded areas, warehouses and supported by end-to-end logistic services.



Taranto



Malta

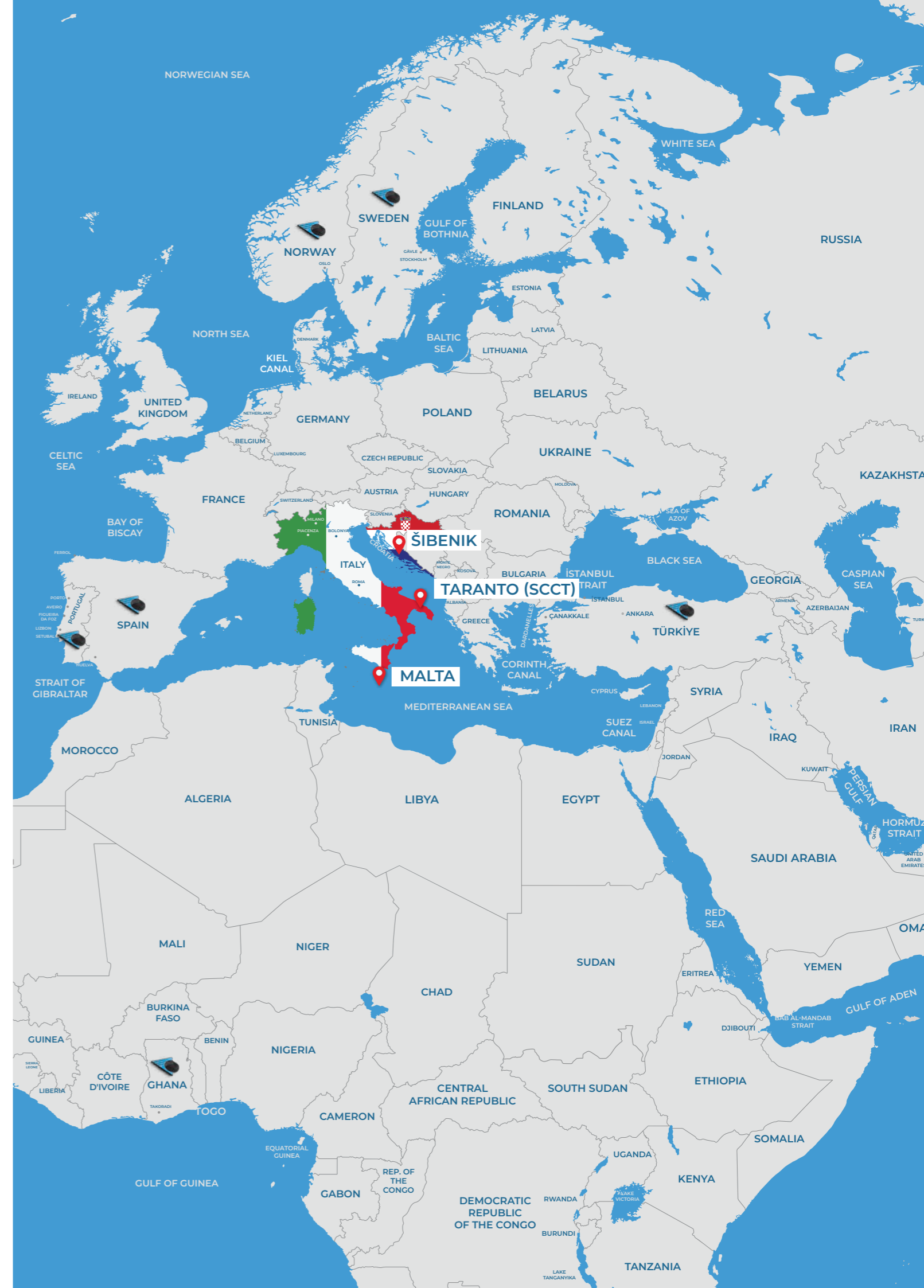


Šibenik

Q4 - 2023
Regional
Throughputs



Container
2,843,282
TEUs



YILPORT Holding Mediterranean Region Sales and Marketing Responsibles

YILPORT Taranto San Cataldo
Container Terminal

Taranto Local Sales:
sm@yilport.com

Head Office Contact: Sales & Marketing
sm@yilport.com

Malta Freeport Terminal:
marketing@maltafreeport.com.mt
www.maltafreeport.mt





Malta Freeport Sets Record on Palais Royal LNG Vessel



Malta Freeport Terminals set a record by handling 14,600 moves on the 400-meter-long CMA CGM Palais Royal LNG mega container ship during a single call. Five megamax quay cranes were deployed on the behemoth 23,000 TEU vessel which departed on schedule to Marseille, the headquarters of CMA CGM Group - the third largest shipping line and one of Malta Freeport's shareholders alongside CMPort as part of Terminal Link, and YILPORT Holding Inc.

This accomplishment showcases Malta Freeport's efficiency in handling the world's largest container vessels and underscores the collaborative strength and teamwork among the involved entities.

MSC Mette - the Largest Containership ever to Call Malta

MFT welcomed MSC Mette - the largest containership ever to berth in Malta. Spanning across four football pitches with a length of 400 meters, and with a capability to carry more than 24,000 TEU containers, MSC Mette berthed at Terminal Two North Quay. It was handled with five quayside cranes completing a remarkable 4,250 container moves. MSC Mette was built by the Jiangnan Shipyard and was delivered last July.

MFT hosted the RH Plenary Meeting for the Assist-IoT R&D Project

MFT hosted the RH Plenary Meeting for the Assist-IoT R&D Project, an initiative centered on advancing next-generation IoT architecture as part of the European Union's Horizon 2020 research and innovation program. The project featured 15 Assist-IoT partners from 7 European countries, each contributing diverse skills and specializations.

Within the framework of Assist-IoT, there is continuous assessment and verification of project results across three areas: Port Automation; Smart Safety of Workers; and Cohesive Vehicle Monitoring and Diagnostics.





Malta Freeport Terminal Participated in European Week for Waste Reduction

MFT actively participated in the European Week for Waste Reduction (EWW) in November, with a central theme this year focused on 'A Packaging-Free Tomorrow'. During the event, MFT employees creatively repurposed wooden pallets into tables and benches, transformed empty oil tanks into tables, and constructed a pathway for local Girl Guides using pellets in the nearby village of Birzebbugia.

Additional initiatives encompassed a seabed clean-up in the local village, the raising of diverse cacti in repurposed pots and glass jars, and the creative transformation of old glass bottles into innovative table lamps. Within the scope of supporting those in need, the Company collected shopping bags which will be donated to the Foodbank Lifeline Foundation. The success of EWW 2023 underscores MFT's commitment to encouraging ongoing habits and mindsets that support sustainable packaging practices and the responsible management of waste materials.



MFT Has Been Awarded Second Place in The Malta Best Waste Management Strategy Award

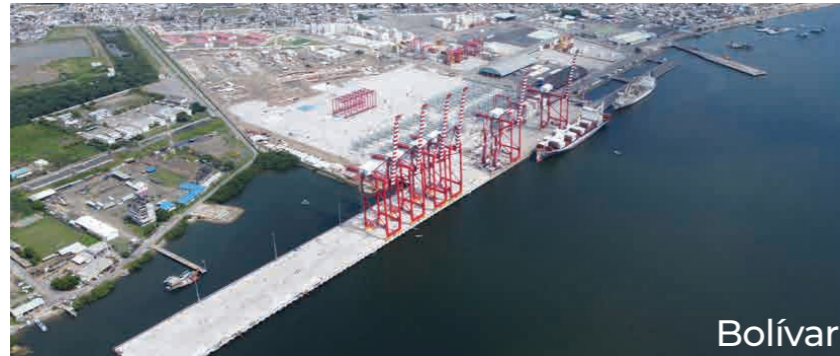
Malta Freeport Terminal has been awarded second place in the Malta Best Waste Management Strategy Award. This award is a testament to the hard work and dedication of the MFT team and recognition for a sustainable waste management strategy that reflects a commitment- to environmental responsibility. MFT's initiatives underscore the importance of teamwork, the positive impact of the Company's efforts on the community and the environment, and its commitment to reuse and recycle the waste generated at the 'Terminals' facility before it can reach a landfill.

Malta Freeport issued its first Waste Management Plan around 20 years ago, outlining strict requirements to maintain a sustainable waste management system, which covers all waste generated within the Freeport and involves the participation of a significant number of persons including Freeport employees, port workers, and contractors.



LATAM REGIONAL INFORMATION

Located in Latin America region, YILPORT's multipurpose terminals offer the best solutions, at different coasts of Ecuador, Peru and Guatemala in the hearts of industrial zones. The terminals are closely connected to main highways offering easy access. YILPORT Puerto Bolívar, TPE Paíta, and YILPORT Quetzal terminals are utilized with bonded and non-bonded areas, warehouses and supported by end-to-end logistic services.



Bolívar



Quetzal



Paíta

Q4 - 2023
Regional
Throughputs



Container
788,476
TEUs



General Cargo
1,352,759
TONs



Liquid
39,320
M³



YILPORT Holding Latam Region Sales and Marketing Responsibles

Head Office Contact: Sales & Marketing
sm@yilport.com

Region Contact: Carolina BURGOS
carolina.burgos@yilport.com





YILPORT's Investment to Develop the Biggest Port in Ecuador

Puerto Bolívar is to come to an end in Phase II

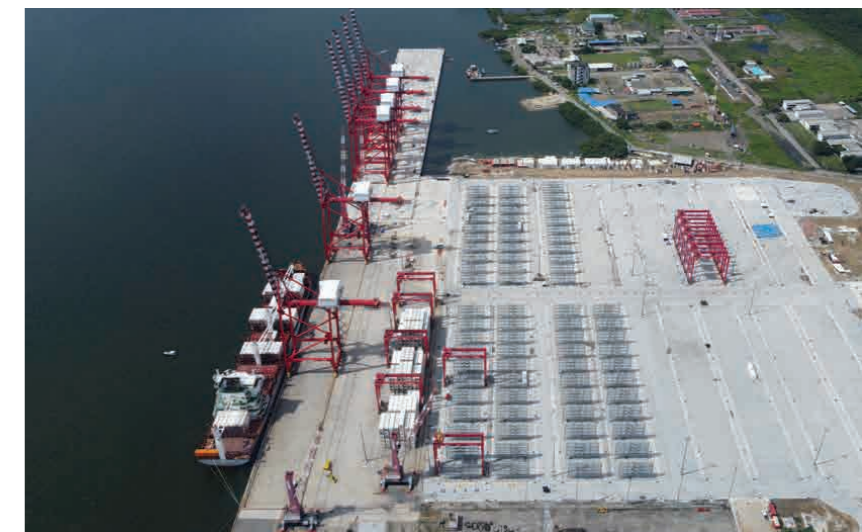
Terminal Received 4 MES STS and 1 RTG Cranes

YILPORT Puerto Bolívar is excited to announce the arrival of state-of-the-art 4 STS and 1 RTG cranes from Mitsui E&S - Paceco. Departed from Japan on October 24th, the vessel carrying this state-of-the-art equipment arrived in Puerto Bolívar on November 29th.

YILPORT Puerto Bolívar is now equipped to handle a diverse range of cargo with its 6 STS, 18 RTG, and 4 Mobile Harbor cranes, and the terminal's capacity is reaching 1M TEUs. In addition to the new equipment, with the new construction of Phase II, the terminal will have a length of 1,410 meters of berth, 780 meters dedicated to container vessels, operational by February 2024. With the vision of becoming the main port of Ecuador, YILPORT Puerto Bolívar will build a top-notch facility with the ambition of the global distribution of Ecuador's high-quality banana and shrimp products guaranteeing that they maintain their utmost quality when they reach various destinations worldwide in optimal conditions. The new yards will have 3,510 reefer plugs to help the gateway and transshipment boxes.

The ongoing dredging will bring the draft to 16 meters on low tide, allowing it to handle ULCV size with the capacity of 20,000 TEUs. The expected cargo traffic in the terminal will triple the existing volume in 3 years. YILPORT Puerto Bolívar will provide one of the best service levels - productivity on the Pacific Coast of South America. Privilege becomes standard.

The arrival of these cutting-edge cranes represents a notable investment by YILPORT Puerto Bolívar in advancing its infrastructure to meet the evolving needs of the logistics industry.





YILPORT Puerto Bolívar Attended the Border Committee

Three years later, due to the COVID-19 pandemic, the governments of Ecuador and Peru reactivated their Border Committees. These committees are annual bilateral mechanisms that promote cooperation, integration, and development in the border region. They are governed by governors in Ecuador and regional governors in Peru and involve the participation of Ministries of Foreign Affairs and agencies that are part of the border control model.

YILPORT Puerto Bolívar was invited by the El Oro government and joined the agenda of the terminal project, which is of great interest to both countries due to the port's proximity to northern Peru. Additionally, other export and logistics companies from both countries attended to seek mutual agreements involving shipment and human traffic.

The meeting included technical tables, and YILPORT's representatives took part in topics such as customs and production development. It was emphasized that efforts will be made to ensure that both countries comply with bilateral agreements regarding transit cargo.



YILPORT Presented Project Updates for the Mining Chamber of Ecuador

The Mining Chamber of Ecuador hosted an event in Quito for representatives of their main associates where YILPORT Puerto Bolívar had the opportunity to share updates about the projects and development in the terminal.

YILPORT Puerto Bolívar is the closest terminal to the sites where the big-scale projects are situated in Ecuador, so the progress of the terminal's project and expansion is of high interest to the mining sector.

YILPORT Puerto Bolívar Elevates Safer and More Efficient Vehicle Unloading



YILPORT Puerto Bolívar proudly introduces an advanced and secure enhancement to its vehicle unloading operations, marking a significant step toward safety and efficiency. Employing innovatively adapted equipment duly certified by the esteemed South American Inspection Services (SAIS), the terminal successfully elevated the productivity of the unloading process.

The key features of this implementation include comprehensive protections strategically positioned on the front of the entire structure and ramps equipped with chain locking mechanisms. These measures are designed to ensure the swift and efficient unloading of vehicles and to guarantee the safety of the cargo throughout the operations.

YILPORT Puerto Bolívar Celebrated Alongside the CIPEM's 87th Anniversary



YILPORT Puerto Bolívar celebrated alongside CIPEM at Mansión Vizcaya, marking 87 years of evolution, strength in overcoming challenges, and collective accomplishments within the business among leading companies in the southern region.

CIPEM expressed its strategic focus for the year, highlighting three key pillars: sustainability, digital transformation, and exports, all aimed at strengthening the industrial sector's business landscape. YILPORT Puerto Bolívar contributed by sharing valuable experiences, visionary insights, and strategic approaches.

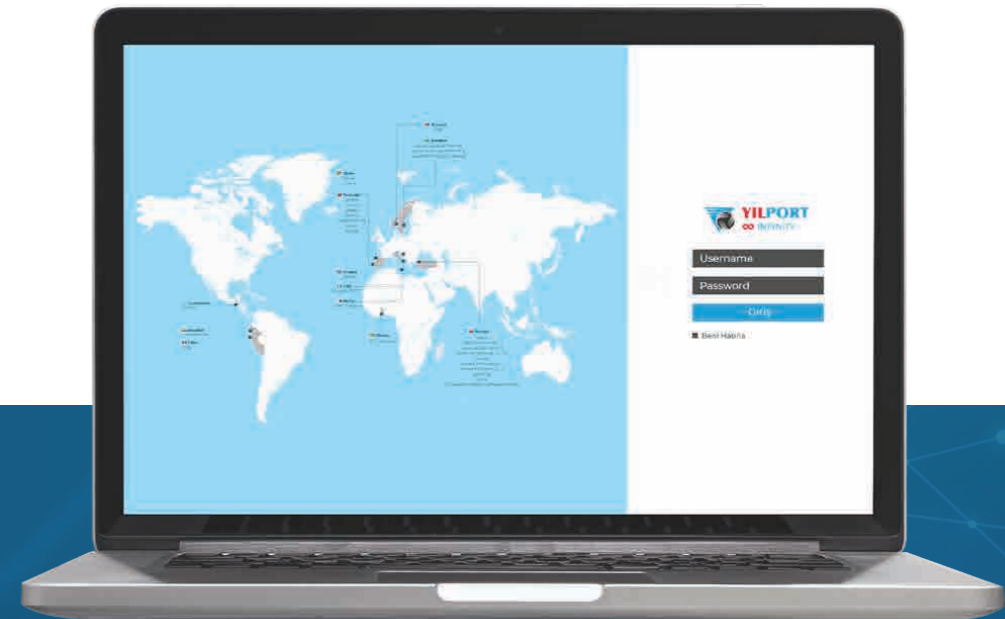
YILPORT LOGISTIC SERVICES



www.yilport.com

Privilege Becomes E-Standard!

YILPORT is fully committed to using its all endeavors for providing the utmost service with the in-house expertise.



Scan QR Code
to Discover

Infinity Community Access Portal Offers:



Elevated operational productivity



Enhanced service delivery



Transparent and streamlined
planning processes



Accelerated throughput times



Optimal utilization of information



Adaptable and customizable
reporting features

<https://infinity.yilport.com>



> YILPORT Nordic Develops Leadership & Management Skills with LeadZone

The Leadzone Management & Leadership Program, covering topics such as human and relationship management, delegation, creating a feedback culture, and visionary leadership, was completed in the Türkiye Region in October with an 81% participation rate.

The program was initially launched for the managers in the Nordic Region in November. This meticulously designed program for professional development takes a total of 3.5 days. Focusing on goals, foundational management principles, analytical thinking, interpersonal relationships, and practices that support the development of a growth mindset, the program is set to commence in other overseas regions starting in 2024.

Competency Adventure at YILPORT Holding <

As part of the Competency Adventure created to enhance YILPORT's core competencies, the focus in October was on the competency of "learning agility." Mustafa ACUNGİL's presentation, a webinar titled "Agile Change in the Feedback Center" was organized to support YILPORT employees and strengthen the concept of agile change. This interactive webinar has presented valuable insights to participants on understanding, implementing, and managing learning agility and change processes. Important strategies for enhancing flexibility in business processes, optimizing efficiency, and achieving success in a rapidly changing work environment were provided for the participants.



YILPORT's Teamwork Webinar: Navigating Challenges for Growth

YILPORT's commitment to elevating its core competencies was exemplified in November through the "Competency Adventure," which focused on the crucial skill of "teamwork." Murat MURATHANOĞLU led an engaging webinar for YILPORT Holding's employees. This interactive session delved into the essence of unity, providing valuable insights into how team members can navigate new conditions and transform challenges into opportunities for personal and professional growth. The webinar aimed to empower participants to adapt more effectively to the dynamic landscape of the business world.



Advanced Root Cause Training from YILPORT Gemlik



YILPORT Gemlik Root Cause Investigation Team which equips the team with advanced methodologies from the literature to effectively conduct investigations post-work accidents and damage incidents.

The program covers key aspects such as making preliminary and preparing final analysis reports and enhancing the team's capabilities for thorough incident analysis and reporting for a safer work environment for its employees and customers.

Training is planned to provide training for 50 terminal tractor operators in the first phase at the end of Q4. In 2024, relevant training planning will be for all operators according to the training results and efficiency.



YILPORT Human Resources Team Attended Career Days

YILPORT Holding Human Resources team participated in the "Bahçeşehir University Career Days Event" held in December.

During this event, which attracted significant attention, the Human Resources team met with numerous students and new graduates.

The Human Resources team provided information regarding the ports, sectoral developments, opportunities, recruitment, and career planning initiatives aligned with YILPORT Holding's growth objectives, the team offered participants the opportunity to get to know YILPORT Holding more closely.

YILPORT Gemlik Acclaims Operational Excellence Once Again

ISO 9001, ISO 10002, ISO 14001, and ISO 45001 (Integrated Management Systems) External Audits were conducted in December and were completed with zero minor and zero major non-conformities.





YOUR **GLOCAL** SOLUTION PARTNER

YILDIRIM is active in 9 industries; **metals and mining, port management, fertilizers and chemicals, energy, shipping and logistics, international trade, energy commodities, construction and real estate, financial investments.**



The key to success is in our DNA

YILPORT HOLDING

World's 12th Biggest Container Terminal Operator*

Game Changer In Port Operations and Container Terminal Management

12	24	7	+7,000
COUNTRIES	PORTS & TERMINALS	DRY TERMINALS	EMPLOYEES

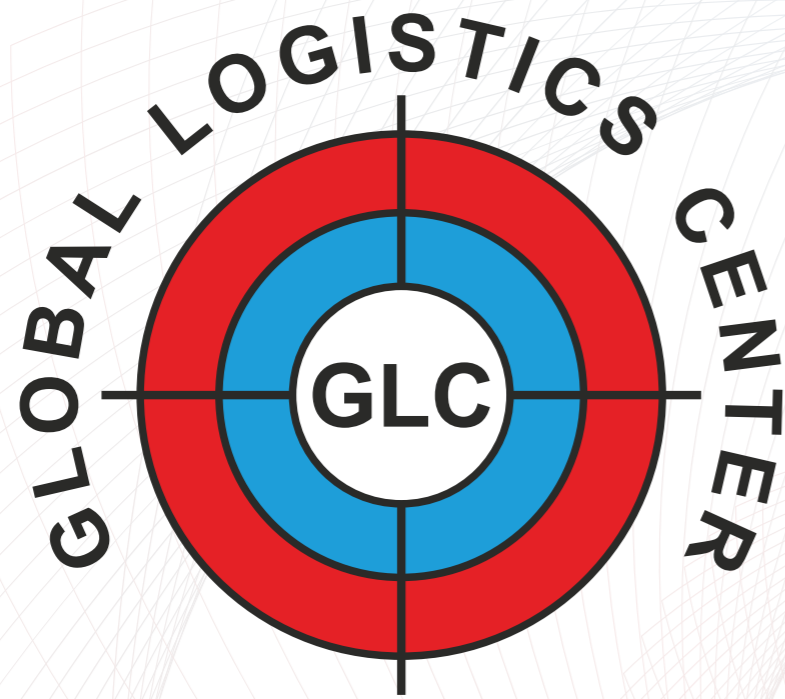
Gebze	Gemlik	Körfez	Solventaş
Malta	Taranto (SCCT)	Ferrol	Huelva
Gävle - CT	Gävle - GCT	Stockholm Nord	Oslo
Liscont	Figueira da Foz	Sotagus	Leixões
Aveiro	Setúbal	Tersado	Šibenik
Puerto Bolívar	Paita	Quetzal	ATSL - Takoradi

*Drewry Global Container Terminal Operators Ranking (2023)



www.yilport.com





The YILPORT Global Logistics Center is not only a technological powerhouse but also a hub for fostering efficiency and the exchange of best practices among terminals.



Efficiency
Through Centralization



Knowledge Exchange
& Collaboration



Data Control
& Reporting



Global Deployment
of Best Practices



Planning Critical
Aspects of Operations



Customer Service for
Customer-Centric Approach



Continuous Improvement
by Advanced Technologies



Harnessing Employee
Expertise



Operational Efficiency
Through Optimization



FOLLOW US ON

Instagram

#yilport



LinkedIn

#yilport





GAMECHANGER

IN PORT OPERATIONS AND MANAGEMENT

Global Reach

YILPORT Holding was established in August 2011 to combine the port and container terminal operations of YILDIRIM Group under one roof.

The Holding has a portfolio of 4 Terminals in Türkiye, 7 in Portugal, 2 in Spain, 2 in Sweden, 1 in Norway, 1 in Malta, 1 Italy, 1 in Croatia, 1 in Peru, 1 in Ecuador, 1 in Guatemala, and 1 in Ghana.

Also ETI Logistic and Transitex, global logistics and forwarding companies are part of YILPORT portfolio.

YILDIRIM Group



YILPORT Holding

